

2023 CATALOG



225 Cadwalader Avenue
Elkins Park, PA 19027-2020
215-884-8105
Fax 215-884-0418
e-mail: info@guldenophthalmics.com
www.guldenophthalmics.com

Color Vision



HRR Pseudoisochromatic Plates

- Congenital and Acquired Testing

15251 - \$237.95



Ishihara 14 Plate Book

15177 - \$145.00

Ishihara 24 Plate Book

15121 - \$189.00

Ishihara 38 Plate Book

15125 - \$210.00



Magnetic Color Vision Tests

- Munsell Color System
- Includes "C" Daylight Glasses
- Easy to use Magnetic Wand

Magnetic Farnsworth Dichotomous D-15

15106 - \$199.00

Magnetic Lanthony Desaturated D-15

15107 - \$199.00



"C" Daylight Glasses™

- Corrects Normal Incandescent Light to Daylight Illumination
- Precise Type "C" Illumination
- Provides Accurate Color Test Results
- Compatible with All Color Tests

15115 - \$45.00

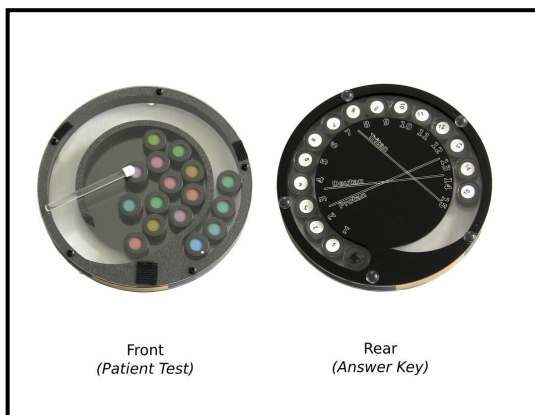
Color Vision



Farnsworth Lantern Flashlight

- 9 Interchangeable Filters
- Accurate
- Inexpensive Substitute for the original Farnsworth Lantern test
- Portable

15171 - \$199.00



Circular Magnetic D-15 Test

- Munsell Color System
- Answer key on rear makes grading convenient
- Available in Farnsworth (saturated chips) and Lanthony (de-saturated chips)

15109 (Saturated) - \$209.00

15110 (De-saturated) - \$209.00



Farnsworth Dichotomous D-15 Lanthony Desaturated D-15

- Munsell Color System
- Quick and Easy to remove
- Includes "C" Daylight Glasses

Saturated 15126 - \$159.00

Desaturated 15127 - \$159.00

Combo D-15 Color Test

Farnsworth / Lanthony 15130 - \$309.00

Sterile Eye Spheres and Conformers



PMMA Orbital Implants – (Sterile)

- 14250 – 10mm \$64.00
- 14251 – 12mm \$64.00
- 14252 – 14mm \$64.00
- 14253 – 16mm \$64.00
- 14254 – 18mm \$64.00
- 14255 – 20mm \$64.00
- 14256 – 22mm \$64.00



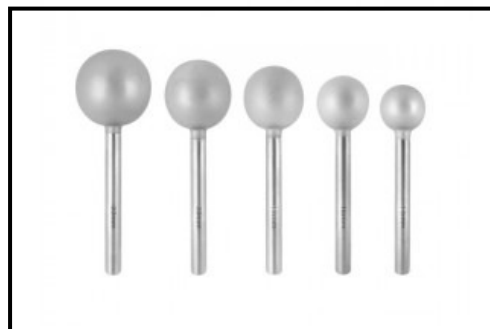
PMMA Eye Conformers – (Sterile)

- 14264 – Small No Holes \$64.00
- 14265 – Medium No Holes \$64.00
- 14266 – Large No Holes \$64.00
- 14267 – Small with Holes \$73.00
- 14268 – Medium with Holes \$73.00
- 14269 – Large with Holes \$73.00



PMMA Orbital Implant Sizer Kit Disposable (Non-Sterile)

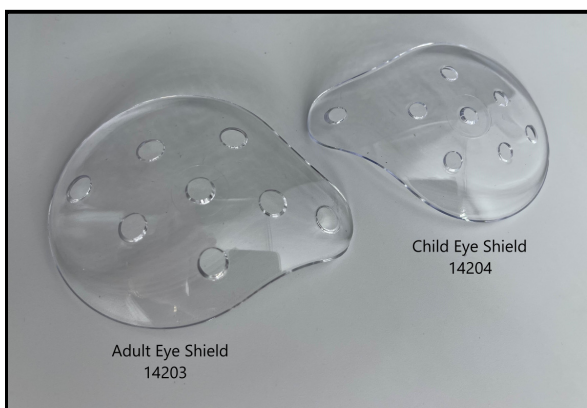
14170 – 14, 16, 18, 20mm Set \$75.00



Stainless Steel Orbital Implant Sizer Kit Reusable Autoclavable (Non-Sterile)

14171 – 14, 16, 18, 20, 22mm Set \$405.00

Eye Shields / Laser Shields



Polycarbonate Eye Shields

- Shatterproof Polycarbonate Plastic

14203 – Adult 12 Pack \$25.00

14204 – Child 12 Pack \$40.00



Black Eye Patch

- Elastic Strap
- Leather Trim

14001 – \$9.00



Dual Foam Lined Eye Shields

- Soft Lined Foam Latex Free
- Comfortable Adjustable Headband
- Shatterproof Polycarbonate Plastic

14102 – \$9.00

14103 – 12 Pack \$46.00



Cox II Laser Eye Shields

- For Protection of the Patient / Personnel
- Non-reflective Surfaces Disperse Laser Light
- Used for Skin Resurfacing or Incision Procedures

21261 – Extra Small \$140.00

21262 – Small \$140.00

21263 – Medium \$140.00

21266 – Large \$140.00



Autoclavable Ocular Shields

23204 – \$85.00



Durette III External Eye Laser Shields

- Includes 1 assembled pair of external shields and extras. Total parts comprise of 2 metal cups, 4 nasal & 4 temporal plastic attachments, 2 elastic headbands and a medium plastic sterilizing tray

21445 – \$299.00

225 Cadwalader Avenue
Elkins Park, PA 19027-2020
215-884-8105

Fax 215-884-0418

e-mail: info@guldenophthalmics.com
www.guldenophthalmics.com

Eye Shields / Laser Shields



Durette IV External Eye Laser Shields

- Includes 1 assembled pair of external shields and extras. Total parts comprise of 2 metal cups, 2 nasal & 2 temporal metal attachments, 2 elastic headbands and a medium plastic sterilizing tray

21555 – \$299.00



Durette Plastic Eye Goggles

- Used with light that is usually created by fluorescent lamps, bright LEDs or diachronic filament bulbs. Visible violet light in the range of 405-420

23442 – \$85.00



Jaeger Lid Plate

- Acrylic jaeger lid plate, concaved with small & medium ends 22 – 25mm

16102 – \$25.00



Autoclavable Jaeger Lid Plate

- Autoclavable jaeger lid plate in Black

23293 – \$62.00

Symblepharon Rings

- The Symblepharon Rings prevent adhesions and shortening or retraction of the fornices and cul-de-sacs without touching the cornea

14345 – Small \$85.00

14346 – Medium \$85.00

14347 – Large \$85.00



Emergency Eye Shields

- Made of Polycarbonate Shatterproof Material
- Universal shape for use with either eye
- Instructions for use on outer surface of Shield

14205 – Pack of 100 \$218.00

Consumables



Chinrest Paper

- 1-3/4 x 5-1/8

15326 – 500 Pack \$8.00



Silicone Suction Cups

- Traditional large silicone suction cups for extracting conformers and laser shields

23012 – 12 Pack \$40.00

225 Cadwalader Avenue
Elkins Park, PA 19027-2020

215-884-8105

Fax 215-884-0418

e-mail: info@guldenophthalmics.com

www.guldenophthalmics.com

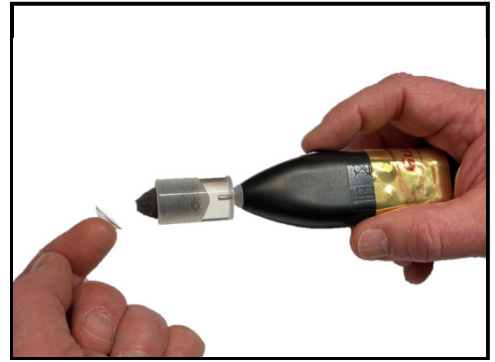
Contact Lens



Contact Lens Check & Keratometer Calibrator

- Easily mounts on most keratometers & Slit Lamps
- Eliminates a need for a radiuscope
- Check for warping or any changes to the base curve & calibrate your keratometer

15179 - \$55.00



Contact Lens Polisher Kit

- Cordless & easy to use
- Fits comfortably in your hand
- 1,400 rpm motor
- Includes flat and cone shaped foam polishing pads

15172 - \$99.00

Diagnostics



Eye View™ Visualizing Scope

- Gives patients a fascinating view of floaters and cataract opacity in their eyes
- Good educational tool
- Easy to use

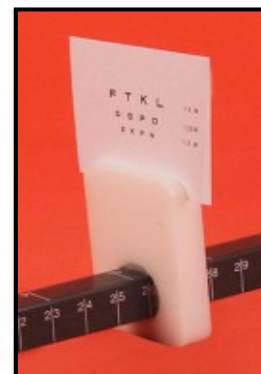
15220 - \$39.00



Idrees Floaterscope

- Measure floater quantity and location
- Helps patients provide feedback before and after vitreolysis surgery

18008 - \$69.00



R-50 Near Point Accommodation Rule

- Easy to read
- Includes acuity cards
- Durable material and ink markings

15150 - \$69.00

Accommodation Cards (5 Pack)

15201 - \$15.00



Luedde Exophthalmometer

- Pocket size
- Accurate parallax correction
- Protective leather case included

16104 - \$33.00

Diagnostics



Neutral Density Bar

- Six standard ND levels
- Convenient "prism bar" format
- Compact, slides into pocket
- Use to grade APD

15118 - \$70.00



Stereo Acuity Test

- Includes adult and pediatric polarized viewers
- Graded circle test from 400 sec to 20 sec
- Answer key on back cover

15211 – Fly \$208.00

15219 – Butterfly \$208.00



Wraparound Polarized Glasses

- Adult and child sizes
- Used with the stereo fly and Butterfly tests

15199 – Child \$15.00

15200 – Adult \$16.00



Retinoscopy Racks w/ Compass

- High quality lenses
- Plus (+) and minus (-) lenses
- Axis Compass

15160 - \$130.00



Retinoscopy Racks

- High quality lenses
- Plus (+) and minus (-) lenses

15161 - \$125.00



Large Aperture Retinoscopy Racks

- High quality lenses
- Plus (+) and minus (-) lenses
- 6 piece set

15162 - \$39.00

Diagnostics



Digital PD Ruler

- Accurate and responsive digital display
- Automatic shut off when placed on level surface

17005 - \$129.00



Digital Pupilometer w/ Vertex Distance

- Measures binocular and monocular pupillary distance (PD)
- Automatic standby

17006 - \$249.00



Reusable Penlight

- 2 "AAA" batteries included

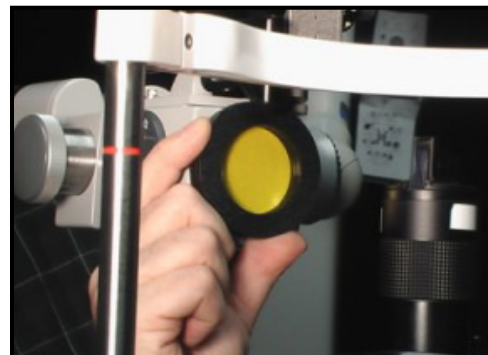
15116 - \$6.00



Eye Template

- Individual eye components for patient education

15178 - \$8.00



Slit Lamp Yellow Filter

- Used to detect subtle staining
- Better visualization of RGP fluorescein patterns

15192 - \$49.00

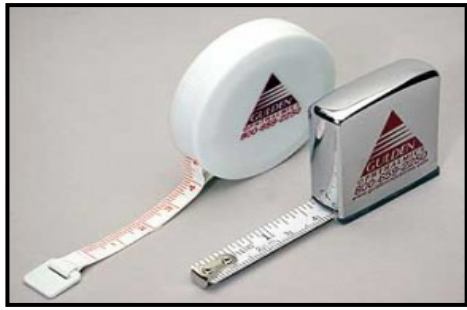


Large Neutral Density Bar

- Six standard ND levels
- Convenient "prism bar" format
- Lighter than competitor versions
- Quantifies APD accurately

15117- \$95.00

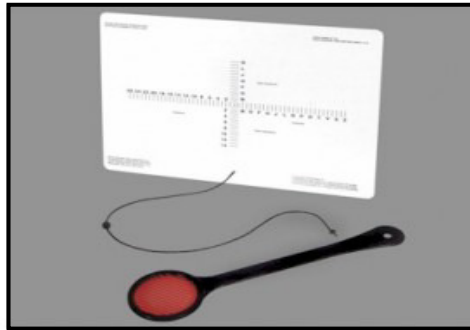
Diagnostics



Plastic Tape Measure

- Light weight, pocket size
- Spring retractable

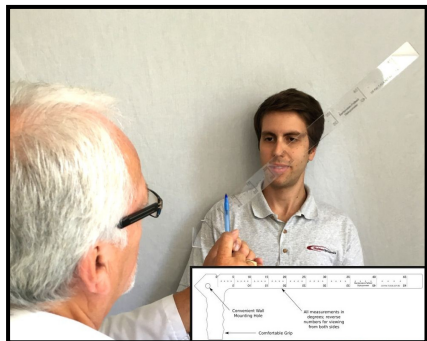
16105 - \$5.00



Eye Alignment Near Card

- Quantitative test
- Measures vertical & horizontal deviation
- Portable & easy to use
- Maddox included

15114- \$30.00



Bardenstein-Patfield Diplopometer

- Quantify diplopia
- Track the progression of conditions such as thyroid myopathy, orbital abscess, tumors, or microvascular cranial neuropathies

12138 – \$59.00



Ohlson VSEF

- The yellow filter increases the visibility of the fluorescein pattern
- The red lens increases the visibility of lissamine green staining on the bulbar conjunctiva
- Leather Pouch

12135 - \$49.00



Phoropter Roto Chart

- Astigmatic Wheel
- English & Spanish continuous text
- Cross Hatch target

15151 - \$53.00

Drop Trays / Organizers



Disposable Spray Caps

- Replaceable caps for standard ophthalmic drop bottles
- Use for Mydriatic, Anesthetic, etc

15195 - 12 Pack \$22.00



Strip Caddy/Disposal Kit

- Convenient & safe way to dispose strips
- Small compact design saves space
- Strips and disposable bags included

15205 - \$56.00



Opticare Eye Drop Dispenser

- Helps patients use their eye drops effectively
- Holds the eye lid open
- Available in 5 colors

15196- \$25.00



Tip Cleaner Caddy

- Quickly disinfects tonometer tips
- Removable, refillable cup
- Easily maintained by a technician
- Keeps drops organized

15169- \$29.00



Caddy 6

- Keeps drops organized
- Rear key holes for wall mounting
- Measures 3"x5"x1"

15168- \$20.00



Opticare Eye Drop Dispenser (10 Pack) Display

- Great counter display

15197- 10 Pack \$220.00

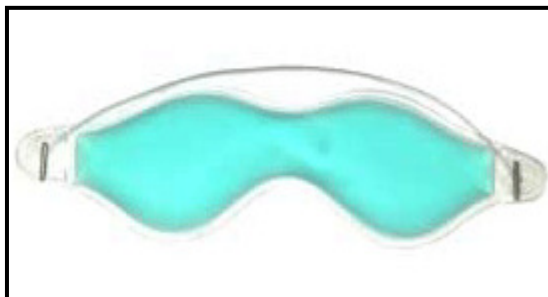
Drop Trays / Organizers



Dry Eye/Lagophthalmos Kit

- Kit includes moisture goggles for day
- Headband device to keep eye/eyes closed at night
- Eliminates the need for taping
- Storage case included

15170 - \$35.00



Gel Eye Mask 2 Pack

- Easy to heat or cool
- Soothes tired eyes

14225 – 2 Pack \$13.00



Lasik Eye Guard

- Very comfortable, adjustable
- Anti-fog ventilation holes
- Logo imprinting available

15124 – 10 Pack \$120.00

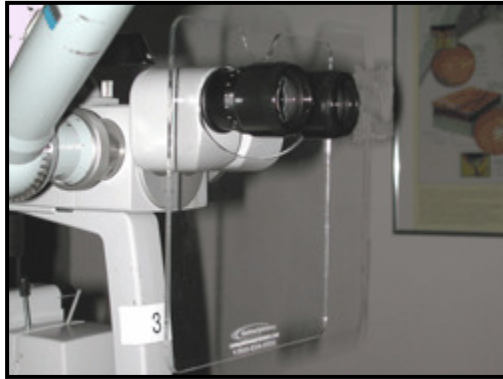


Magic Touch Eye Drop Applicator

- Simplifies the application process
- Safe and sanitary

15198 – \$12.00

Instruments & Accessories



Slit Lamp Breath Shield

- Provides a barrier between your patients and you
- Easy to install and clean
- Size – 7.5" Long x 5.5" Wide.

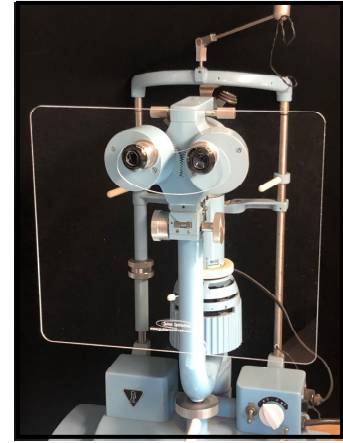
14226 - \$28.00



Gutierrez MG Expressor Lid Plate S.S.

- Comfortable for the doctor in a natural position when expressing the meibomian glands
- Can be sterilized in an autoclave

16S11 - \$59.00



Large Slit Lamp Breath Shield

- Provides a barrier between your patients and you
- Easy to install and clean
- Size – 11.5" Long x 10" Wide

14229- \$38.00

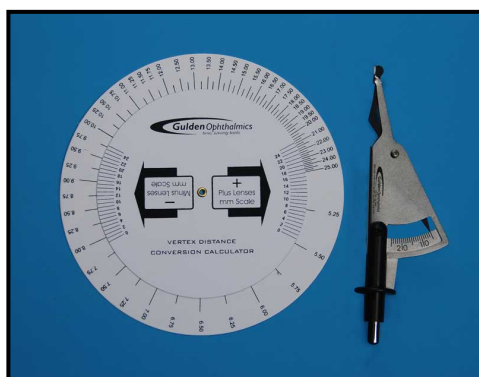


Digital PD Ruler Breath Shield

- Provides a barrier between your patients and you
- Attaches with dual-lock velcro

14230 - \$28.00

Instruments & Accessories



Distometer Set

- Used to accurately measure the vertex distance between the patient's cornea and the lenses in eyeglasses or trial frames
- Metal distometer
- Conversion calculator disc

16127 - \$99.00



Cataract / IOL Model Lens Stabilizer

- Used to help stabilize the cataract or IOL lenses.
- Easily slides over models post
- Made of a clear acrylic

15263 - \$15.00



Cornea Model Lens Stabilizer

- Used to help stabilize the cornea lenses.
- Easily slides over models post
- Made of a clear acrylic

15264 - \$15.00



Slit Lamp Elbow Rest

- Keeps users arm & hand steady for holding lenses and filters
- Elevates from 9 to 14.5 cm
- Twist to lock position

15194- \$49.00

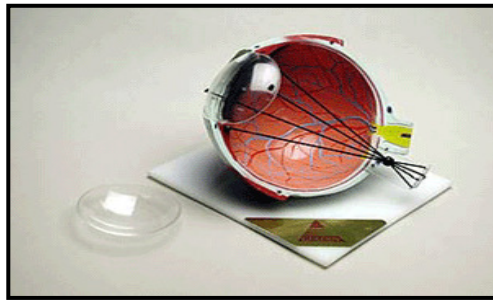


MagniTouch 3x LED Magnifier

- Useful for low vision patients
- Use in restaurants and low light settings
- Includes case, cleaning cloth, and batteries

11120 - \$49.00

Models



Astigmatism Eye Model

- Demonstrates Astigmatism
- Myopia
- Hyperopia
- Refraction error

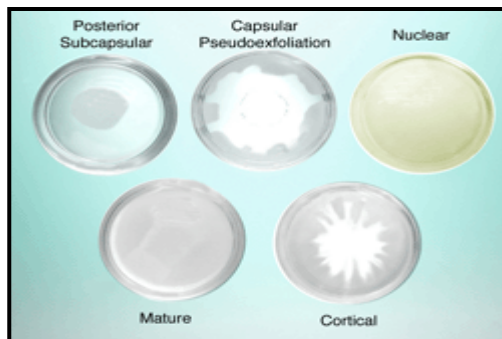
15123 - \$99.00



Cataract Eye Model

- Includes 5 interchangeable lenses
- Subcapsular
- Capsular
- Mature
- Cortical
- Nuclear

15129 - \$99.00



Cataract Lenses

- Includes 5 interchangeable lenses
- Subcapsular
- Capsular
- Mature
- Cortical
- Nuclear

15119 - \$29.00



Cornea Model

- Includes 5 interchangeable corneas
- Keratoconus
- Bullous Keratopathy
- Fuch's Endothelial Dystrophy
- Recurrent Corneal Erosion
- Normal cornea

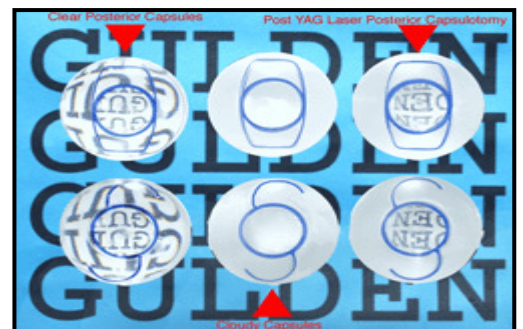
15182 - \$99.00



IOL Eye Model

- Includes 6 interchangeable corneas
- IOL and Toric implants of clear posterior capsule, cloudy capsule & post YAG posterior capsulotomy

15149 - \$99.00

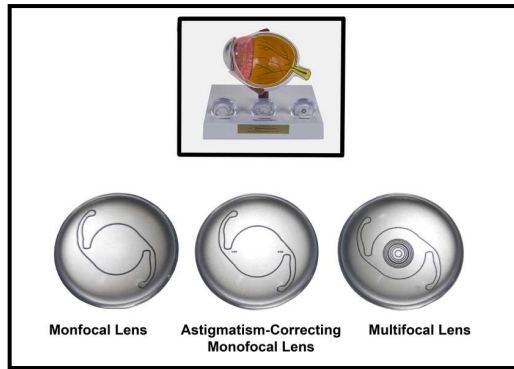


IOL Lenses

- IOL and Toric implants of clear posterior capsule, cloudy capsule & post YAG posterior capsulotomy

15147 - \$49.00

Models



Premium IOL Options Set

- Helps educate patients on today's IOL options.
- Set of 3 interchangeable lenses, monofocal, astigmatism-correcting monofocal, and multifocal.

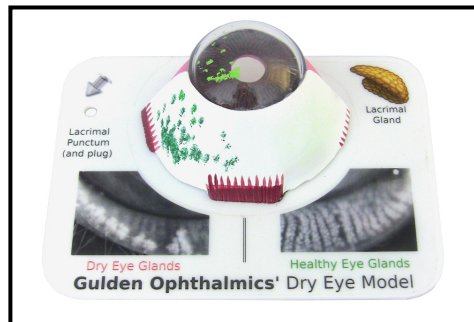
15148 - \$29.00



Complete Eye Model

- Provides a unique opportunity to demonstrate myopia and hyperopia through adjustment of the focal rays

15152 - \$99.00



Dry Eye Model

- Educate your patient on the causes, diagnostic tests, and treatment options of dry eye disease.

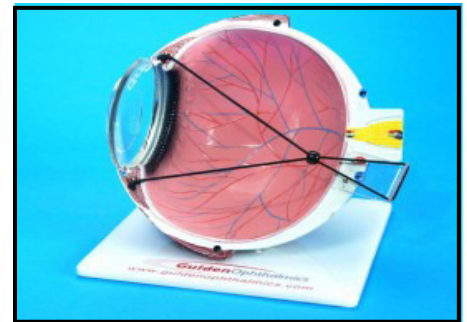
15183 - \$89.00



Small Eye Model

- Assists the ophthalmic professional in educating patients in the anatomy of the human eye

15222 - \$99.00



Lasik Eye Model

- Assists the ophthalmic professional in educating patients about Lasik surgery procedures

15120 - \$99.00



Detachment Eye Model

- Assists the ophthalmic professional in educating patients in the detachment of either the vitreous or the retina

15163 - \$99.00

Models



Siepser Vitreous Floater Demonstrator

- Quickly & easily explain "shadowing"
- Measures 3 inches in diameter

15153 - \$54.00



Siepser Hemorrhage Demonstrator

- Demonstrates the effects of vitreous hemorrhage & head position

15224- \$54.00



Timberlake Training Eye Model

- Improve the teaching of funduscopy skills
- Changeable pupil sizes
- Multiple retinal pathologies

15173 - \$99.00



VTD Model

- AMD
- Diabetic Retinopathy
- Glaucoma

15223 - \$99.00



Siepser Dry Eye Model

- Demonstrates the effects of dry eye
- Easily explain the loss of clarity that occurs due to corneal haze
- Helps explain hyperemic conjunctiva associated with the roughness and irritation of the cornea

15226 - \$99.00

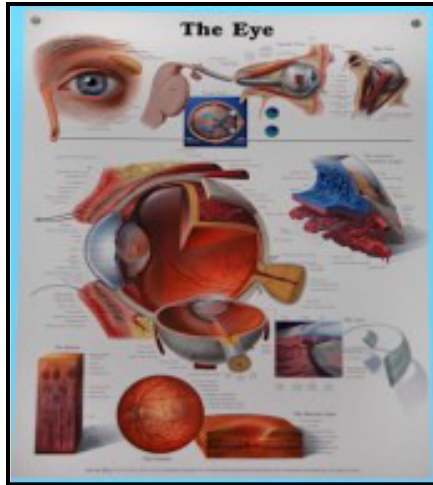


Retinoscopy Practice Eye

- Ideal for practicing retinoscopy and teaching optical fundamentals
- Comes with solution shroud and case

15174 - \$99.00

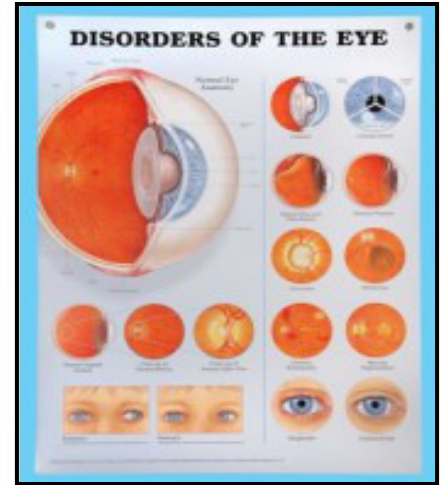
Educational Posters



Eye Poster

- Highly instructive and useful for both patients and office staff
- Measures 20"x 26"

15254 - \$29.00



Eye Disorder Poster

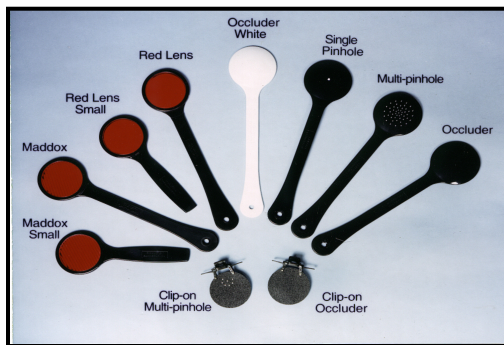
- Shows a detailed, clear cross section of the eye
- Measures 20"x 26"

15255 - \$29.00

GuldenOphthalmics

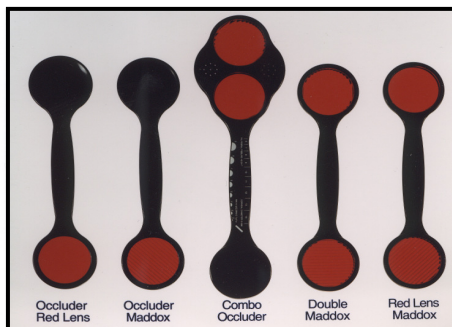
225 Cadwalader Avenue
Elkins Park, PA 19027-2020
215-884-8105
Fax 215-884-0418
e-mail: info@guldenophthalmics.com
www.guldenophthalmics.com

Occluders



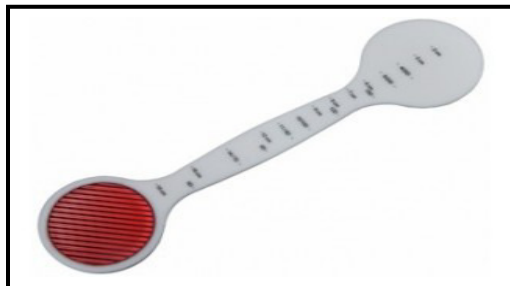
Single Occluders

12110	Occluder Black (short)	\$9.00
12112	Occluder Black (long)	\$10.00
12113	Maddox (long)	\$13.00
12114	Maddox (short)	\$12.00
12115	Red Lens (long)	\$12.00
12116	Red Lens (short)	\$11.00
12117	Occluder White	\$10.00
12127	Clip-on Multiple Pinhole	\$11.00
12128	Clip-on Occluder	\$10.00
12129	Single Pinhole	\$12.00
12130	Multiple Pinhole	\$15.00
12132	Short Multi Pinhole	\$13.00



Double Occluders

12121	Occluder & Red Lens	\$16.00
12122	Occluder & Maddox	\$16.00
12124	Double Maddox	\$18.00
12125	Maddox Red Lens	\$17.00
12126	Combo Occluder	\$29.00



Lewerenz Accommodation Maddox

- Calibrated scale in both centimeters and dioplers

12137 - \$29.00



Lorgnette Occluder

- Easy to use
- Suitable for any age
- Saves time

12133 - \$19.00



Spielmann Occluder

- For clinic or office
- Eliminates retinal rivalry
- Enhances visual acuity testing

12120 - \$29.00



Berens Pinhole Test

- Combines a standard pinhole and an eye dominance test

15102 - \$6.00

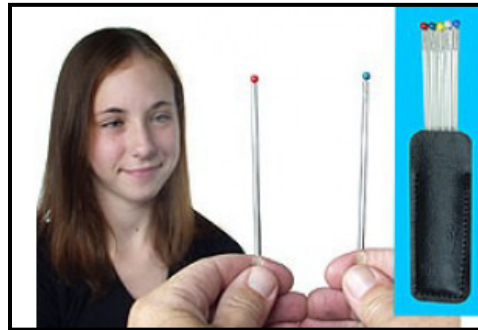
Pediatric Tools



Brock String

- Used to enhance convergence ability

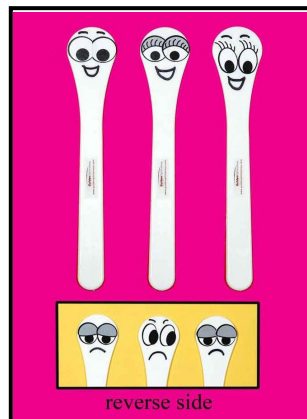
15133 - \$9.00



Color Fixation Sticks

- Test ocular motility
- Test confrontation visual fields
- Case included

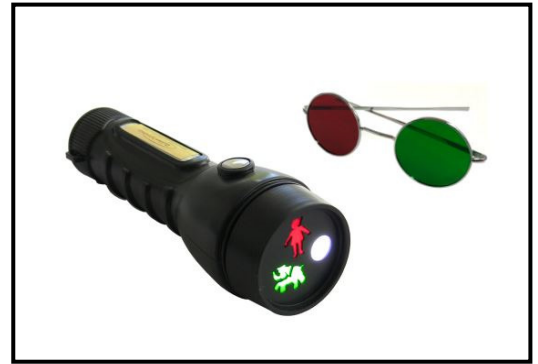
15176 - \$20.00



Face Fixation Sticks

- Set of three kid friendly fixation targets
- Each stick is double sided

15315 - 3 Pack \$17.00



LED Three Character Test

- Durable quality
- Reversible red and green glasses
- Batteries included

15305 - \$49.00

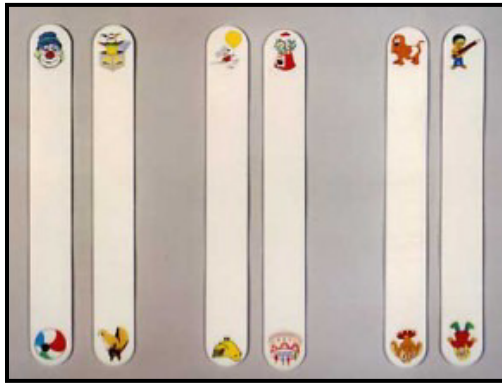


Pediatric Fixation Pack

- Set of four fixation targets
- Perfect for young and non-verbal patients
- Penlight included

15132 - \$25.00

Pediatric Tools



Pediatric Fixation Sticks 3 Pack

- New and improved UV printed images
- 12 different colored images
- Calibrated for near vision

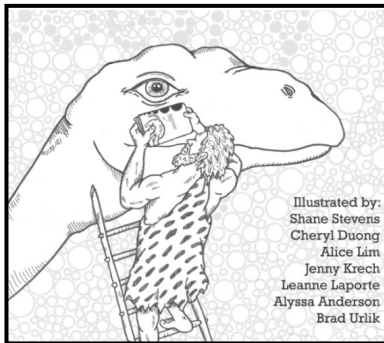
15314 – 3 Pack \$20.00



Pediatric Fixation Wand

- Aids in visual testing and therapeutic situations

15215 – \$10.00



Optopoetry Book

- Fun poems and drawings all about vision!

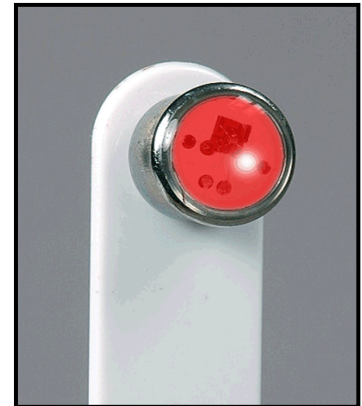
19000 – \$20.20



Flashing Butterfly Fixation Stick

- Simulation targets for the young patient
- On / Off button

15203 – \$12.00



Flashing Fixation Sticks 2 Pack

- Simulation targets for the young patient
- Easy twist on and off
- Replaceable watch battery

15325 – 2 Pack \$20.00

Pediatric Tools



Red and Green Pediatric Glasses

- Used for worth 4 dot and 3-character tests
- Designed for children

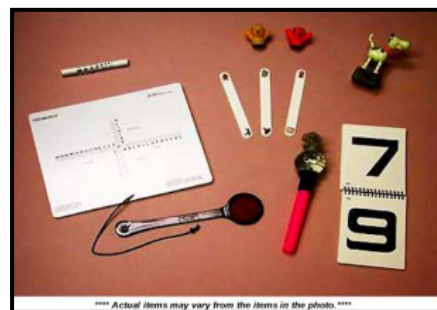
15321 – 6 Pack \$40.00



Pediatric Chronister Pocket Acuity Chart

- Quick and easy to use
- Laminated & pocket size

15131- \$30.00



Pediatric Screening Kit

- Includes a eye alignment near card with Maddox rod, pediatric chronister pocket acuity card chart, and pediatric fixation pack with re-useable penlight

15311 – \$89.00

225 Cadwalader Avenue
Elkins Park, PA 19027-2020

215-884-8105

Fax 215-884-0418

e-mail: info@guldenophthalmics.com

www.guldenophthalmics.com

Practice Eyes



I-BORG Practice Face

- Realistic shape & dimensions
- Central corneal thickness 0.5mm
- Peripheral corneal thickness 0.8mm

17102 - \$149.00



Phake-I

- Disposable Eyes
- Central corneal thickness 0.5mm
- Peripheral corneal thickness 0.8mm
- 8mm "dilated" pupil

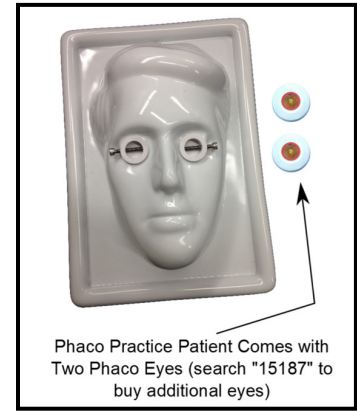
17004 - \$80.00 (4 pack)



Siesper Slit Suture Kit

- Easy to learn
- Includes full instruction video

16110 - \$69.00



Phaco Practice Patient

- Includes half head to hold the eyes, a plastic tray to contain the head & liquids & a pair of disposable practice eyes

15186 - \$149.00



Phaco Practice Eyes

- Disposable Eyes
- Easily practice the basic steps of phaco surgery

15187 - \$50.00 (10 pack)



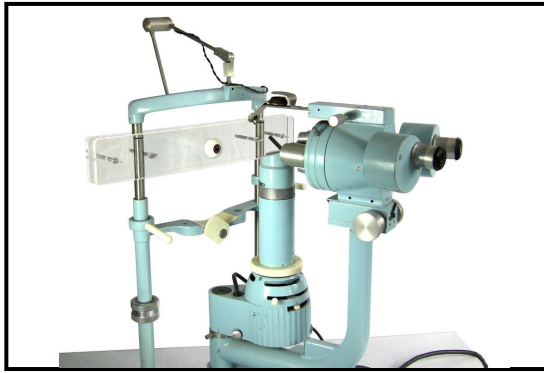
Reti-Eye

- Practice indirect Ophthalmoscopy & Photocoagulation
- Slit Lamp attachment
- Replacement retinal films available

15207 - \$159.00

15217 - \$44.00 (10 Pack Films)

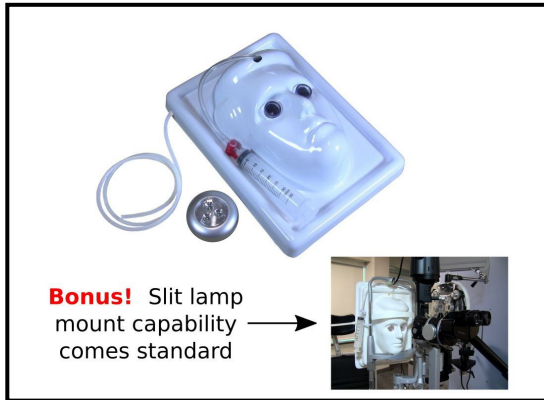
Practice Eyes



Silicone Set Up Eye Slit Lamp Holder

- Made of high-quality acrylic
- Attaches to any slit lamp
- Mounting hardware included

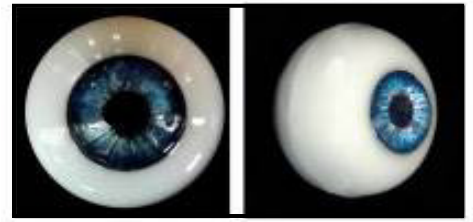
17016 – \$60.00



Idrees Eye Surgery Practice Head

- Suction mechanism holds animal eyes
- LEDs illuminate fundus
- Easy to clean
- Includes fluid collection tube

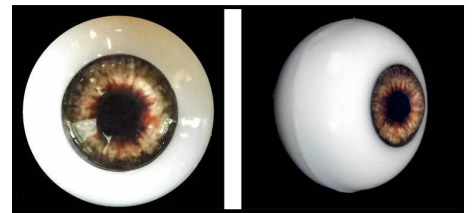
17105 – \$199.00



Silicone Set-up Eye Blue

- Made of Silicone
- Ideal for training and equipment set-up

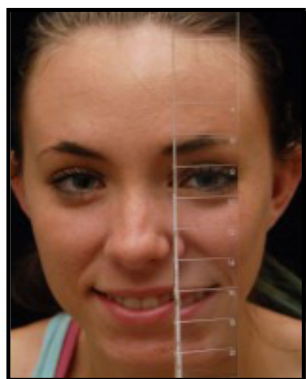
17018 – \$35.00



Silicone Set-up Eye Brown

- Made of Silicone
- Ideal for training and equipment set-up

17017 – \$35.00



EZ View Prism Bars

- Improves vectographic results
- Reduces washout and eliminates reversal
- Diopters in corner viewing plane for easier viewing results
- Includes leather pouch
- Available in vertical or horizontal

11113 – Small Vertical \$95.00

- 0.5-1-1.5-2-2.5-3-3.5-4-5-6-7-8Δ

11116 – Horizontal \$105.00

- 1-2-4-6-8-10-12-14-16-18-20-25-30-35-40-45Δ

11117 – Vertical \$105.00

- 1-2-3-4-5-6-8-10-12-14-16-18-20-25-30Δ



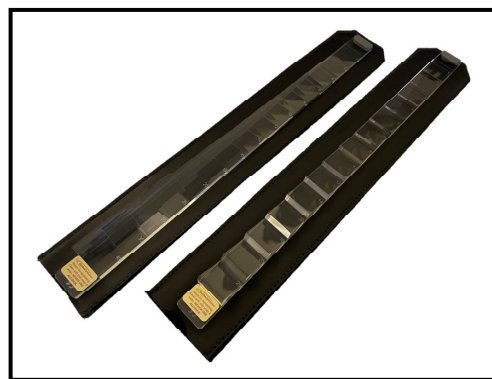
EZ View Prism Bar Sets

- Improves vectographic results
- Reduces washout and eliminates reversal
- Diopters in corner viewing plane for easier viewing results
- Includes 1 horizontal and 1 vertical prism bars
- Horizontal = 1-2-4-6-8-10-12-14-16-18-20-25-30-35-40-45Δ
- Vertical = 1-2-3-4-5-6-8-10-12-14-16-18-20-25-30Δ

11314 – Leather Pouches \$208.00

11L14 – Hard Molded Case \$208.00

Prism Bars



LB- EZ View Large Prism Bars

- Improves vectographic results
- Reduces washout and eliminates reversal
- Diopters in corner viewing plane for easier viewing results
- Includes leather pouch
- Available in vertical or horizontal

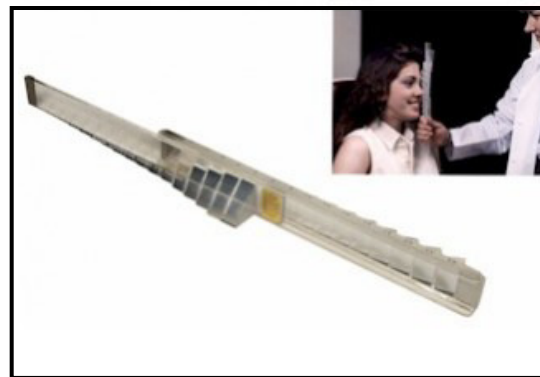
11111 – Large Vertical \$155.00

- 1-2-3-4-5-6-8-10-12-14-16-18-20-25Δ

11112 – Large Horizontal \$155.00

- 1-2-4-6-8-10-12-14-16-18-20-25-30-35-40Δ

11315 – Horizontal/Vertical \$308.00



Combination Horizontal and Vertical Prism Bar

- Provides accurate measurement of ocular deviation
- Sturdy rails for smooth sliding of the horizontal bar
- Used together or separately
- Includes leather pouch
- Horizontal = 1-2-4-6-8-10-12-14-16-18-20-25-30-35-40-45Δ
- Vertical = 1-2-3-4-5-6-8-10-12-14-16-18-20-25-30Δ

11313 – \$235.00

Prism Sets



S-16 Prism Set

- Solves the problem of birefringence
- Made of high-quality plastic
- Includes sizes 1/2-1-2-4-6-8-10-12-15-20-25-30-35-40-45-50Δ & Red Lens
- Hard molded case

11L16 - \$165.00



S-16U Universal Prism Set

- Solves the problem of birefringence
- Made of high-quality plastic
- Includes sizes 1/2-1-2-4-6-8-10-12-15-20-25-30-35-40-45-50Δ & Red Lens
- Hard molded case

11317 - \$200.00



MS-10 Prism Set with Maddox Rod

- Solves the problem of birefringence
- Includes sizes 1/2-1-2-4-6-8-10-15-20-25Δ & Maddox rod
- Hard molded case

11310 - \$115.00



S-22 Prism Set

- Solves the problem of birefringence
- Made of high-quality plastic
- Includes sizes 1/2-1-2-3-4-5-6-7-8-9-10-12-14-16-18-20-25-30-35-40-45-50Δ & Red Lens
- Hard molded case

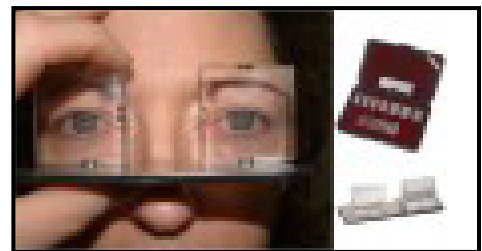
11L22 - \$218.00



S-22U Universal Prism Set

- Solves the problem of birefringence
- Made of high-quality plastic
- Includes sizes 1/2-1-2-3-4-5-6-7-8-9-10-12-14-16-18-20-25-30-35-40-45-50Δ & Red Lens
- Hard molded case

11323 - \$258.00



Bishop Alignment Prism Set

- Designed to provide advantages in measuring large angle strabismus
- Includes sizes 1/2-1-2-4-6-8-10-12-15-20-25-30-35-40-45-50Δ Red Lens

11311 - \$249.00

Prism Sets



S-16 Magnetic Stick Prism Set

- Compact case takes up less counter space
- Strong imbedded magnets attach easily to supplied magnetic handles
- Use as stick prisms or individually
- Includes sizes 1/2-1-2-4-6-8-10-12-15-20-25-30-35-40-45-50Δ Red Lens and two magnetic stick handles
- Additional handles available
- Made of high-quality plastic
- Hard molded case

11L17 - \$210.00

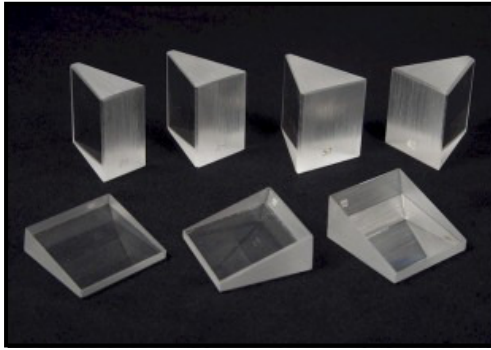


S-22 Magnetic Stick Prism Set

- Compact case takes up less counter space
- Strong imbedded magnets attach easily to supplied magnetic handles
- Use as stick prisms or individually
- Includes sizes 1/2-1-2-3-4-5-6-7-8-9-10-12-14-16-18-20-25-30-35-40-45-50Δ & Red Lens and two magnetic stick handles
- Additional handles available
- Made of high-quality plastic
- Hard molded case

11L23 - \$263.00

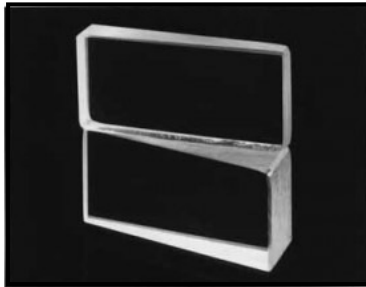
Prisms



Single Square Prisms

- Available sizes include 1/2-1-2-3-4-5-6-7-8-9-10-12-14-15-16-18-20-25-30-35-40-45-50Δ
- Made of high-quality acrylic

11101 - \$11.00

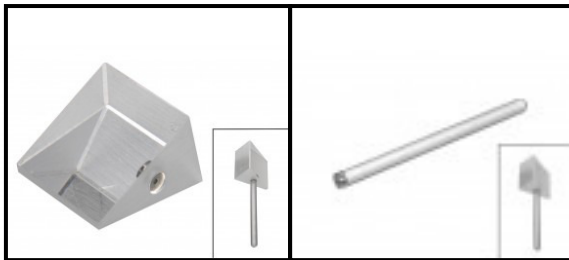


Single Vergence Facility Prisms

- Used to test for binocular vision disorders and symptoms
- Default 3 BI/12 BO; all diopter versions available
- Made of high-quality plastic

11107 - (3 BI/12 BO) \$16.50

11107S - Custom diopters \$16.50



Single Magnetic Prisms / Stick Prisms

- Strong imbedded magnets
- Available sizes include 1/2-1-2-3-4-5-6-7-8-9-10-12-14-15-16-18-20-25-30-35-40-45-50Δ
- Made of high-quality plastic

11201 – Magnetic Square Prism \$14.00

11202 – Magnetic Stick \$6.00

11204 – Magnetic Stick w/ Prism \$18.00



Single Stick Prisms

- Use for vision therapy
- Available sizes include 1/2-1-2-3-4-5-6-7-8-9-10-12-14-15-16-18-20-25-30-35-40-45-50Δ
- 3-inch plastic handle
- Made of high-quality plastic

11104 - \$15.00



Single Vergence Facility Stick Prisms

- Used to test for binocular vision disorders and symptoms
- All diopter versions available
- 3-inch plastic handle
- Made of high-quality plastic

11108 - \$18.50



Single Magnetic Vergence Facility Prisms / Stick Prisms

- Strong embedded magnets
- All diopter versions available
- Made of high-quality plastic

11207 – Single VF \$19.50

11208 – VF Stick w/ Prism \$23.50

Surgical Tools



Magnetic Spuds

- Remove foreign bodies with minimal trauma
- Self contained magnetic field

16108 – Ellis \$75.00

16109 – Dix \$75.00



Eye Sphere Introducer

- Helps hold and then place eye spheres in enucleated or eviscerated eye orbits
- Designed for efficient accurate placement

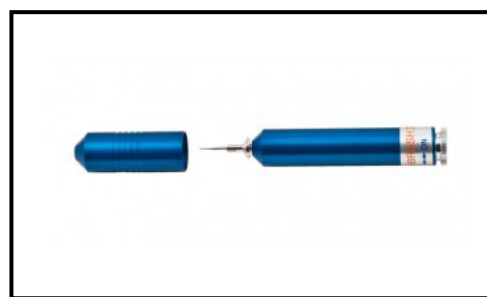
16118 - \$179.00



Small Tono Tip Cleaner

- Quick and easy to use
- Portable

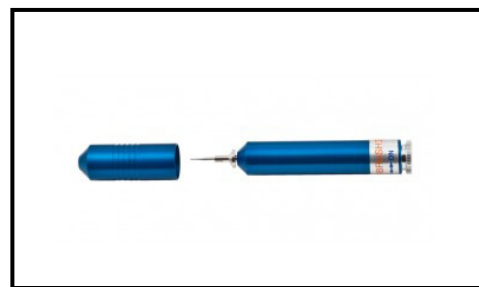
15225 - \$29.00



Algerbrush II Rust Ring Remover .5mm Burr

- Used to remove foreign bodies rust from the eye of a patient
- Low torque motor powered by one single "AA" battery
- Equipped with a 0.5mm burr

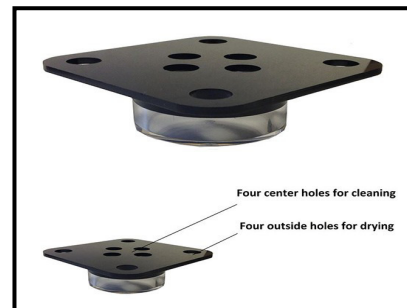
16120 - \$69.00



Algerbrush II Rust Ring Remover 1mm Burr

- Used to remove foreign bodies rust from the eye of a patient
- Low torque motor powered by one single "AA" battery
- Equipped with a 1mm burr

16121 - \$69.00



Tono Tip Cleaner

- Soak up to 4 tonometer tips
- Dry up to 4 tonometer tips

15175 – \$19.00

Surgical Tools



Algerbrush Replacement 0.5mm Burrs 5 Pack

- Replacement 0.5mm burrs for the Algerbrush II

16122 - \$50.00



Algerbrush II Replacement Chuck

- Replacement chuck for the Algerbrush II

16124 - \$10.00



AuroSling

- Used in the surgical procedure for the correction of ptosis
- Comes Sterile

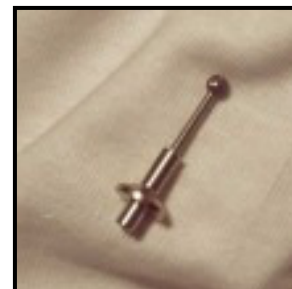
14130 - \$99.00



Algerbrush Replacement 1mm Burrs 5 Pack

- Replacement 1mm burrs for the Algerbrush II

16123 - \$50.00

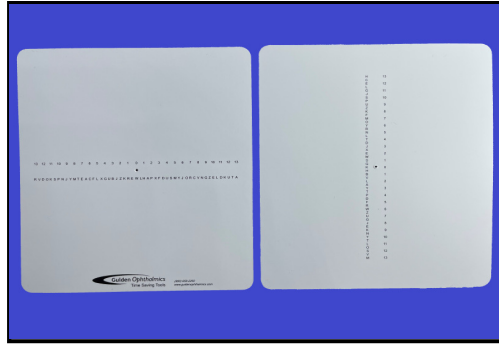


Algerbrush Chuck w/ 2.5mm Round Fine Diamond Burr

- 2.5mm round fine diamond burr with chuck used with the algerbrush II

16125 - \$60.00

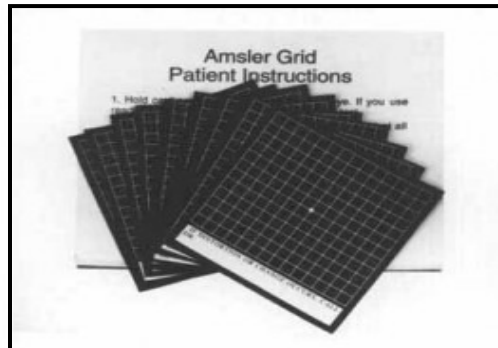
Test Cards



Modified Thorington Test Card

- Used to check the alignment of the eyes
- Helps diagnose uncrossed or crossed diplopia and RhypoP, LhyperP, RhyperP and LhypoP

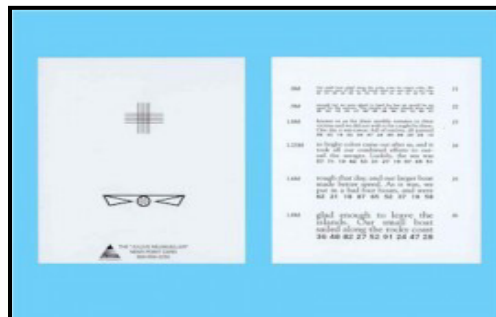
15111 - \$9.00



Magnetic Modified Amsler Grid

- Self administered test for patients
- Valuable tool for detecting central visual field distortion

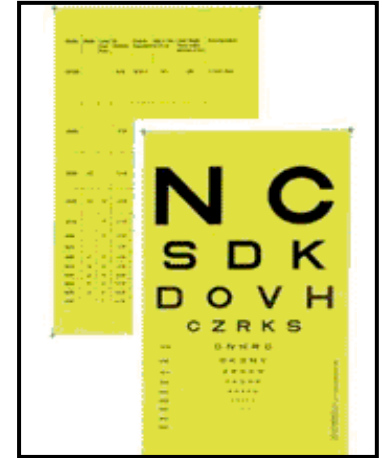
15301 – 10 Pack \$15.00



Neumueller Card

- Print is designed in both “M” & “J” notation
- Print is crisp and sharp to ensure quality acuity vision testing

15122 - \$9.00



Eger Equivalent Card

- Includes reversible red & green spectacles
- Highly durable

15134 - \$9.00



Wormington Card

- Used to measure a patient's single letter near acuity & reading acuity

15135 – English Version \$7.00

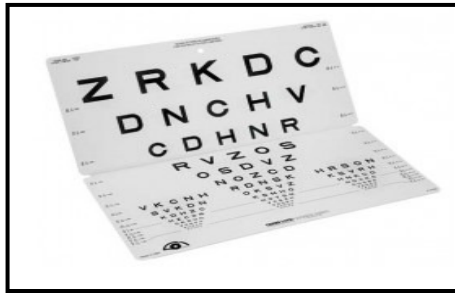


Near Point Card Set

- 2 double side card set

15303 - \$13.00

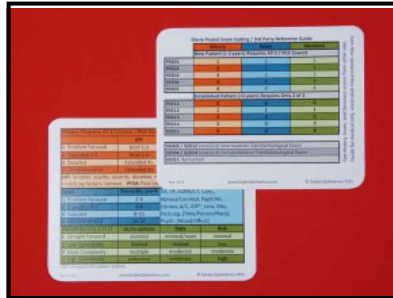
Test Cards



Sloan Letters Folding Chart

- Folding eye chart with sloan letters optotypes
- Center hold for wall hanging
- 10 feet; 3-meter testing distance

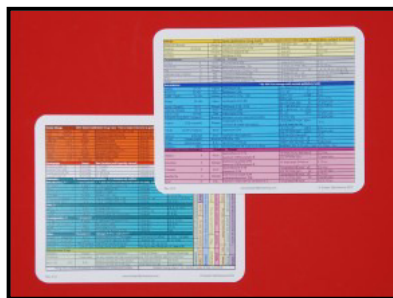
15341- \$58.00



Dovie CPT Coding Card

- Pocket sized reference card for CPT and HCPCS coding
- 2mil thick card

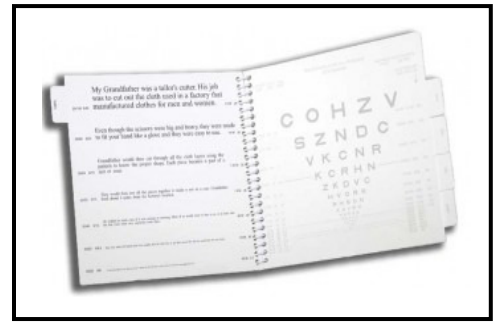
15208 – \$8.00



Dovie Ophthalmic Drug Card

- Pocket sized reference card
- Contains concise information on over 65 most commonly used ophthalmic medications
- 2mil thick card

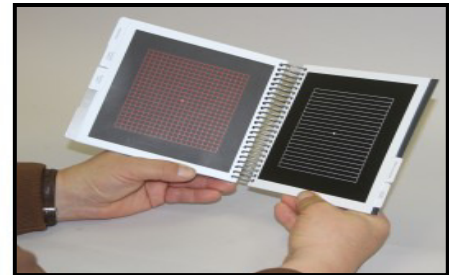
15136 – \$8.00



Adult Near-Contrast Test Booklet

- Provides contrast sensitivity levels of 100,25,10,5 & 2.5 percent using Michelson measures

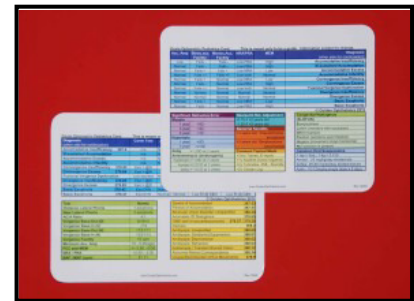
15361- \$152.95



Amsler Grid Book

- Provides 7 Amsler grids and a score sheet

15362 – \$68.95

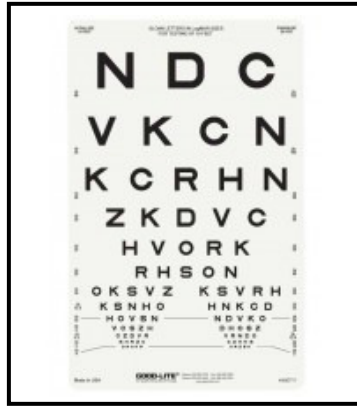


Dovie Peds and Pupil Card

- Pocket sized reference card
- Contains concise information on the 11 most common binocular vision disorders and their associated clinical exam findings
- 2mil thick card

15137 – \$8.00

Test Cards



Sloan Letter Proportionally Spaced Distance

- Can be used separate or with the ESV 1200 Illuminated cabinet
- Measures 9" X 14"

15368 – \$21.00

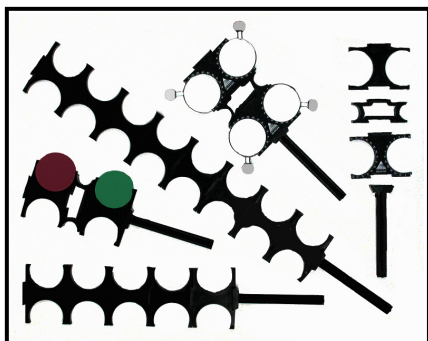


LEA Symbols Proportionally Spaced

- Can be used separate or with the ESV 1200 Illuminated cabinet
- Measures 9" X 14"

15369 – \$21.00

Trial Lenses / Flippers



Lens Holders – (lenses not included)

15142 - Lens Holder	\$6.00
15143 – Lens Holder w/axis	\$7.00
15141 – Nose Bridge	\$6.00
15140 – Handle	\$6.00
15144 – 4 Well	\$22.00
15145 – 8 Well	\$33.00
12301- Small Red/Green Maddox	\$26.00



Opto Clip

- Clips on top or bottom of glasses
- Holds three lenses each

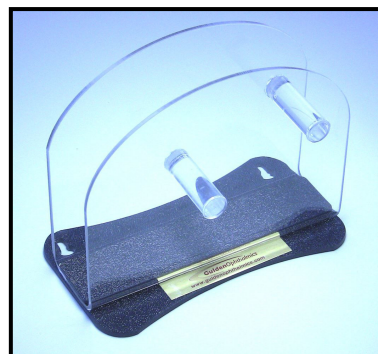
15323– \$49.00



Jackson Crossed Cylinder

- Set of two

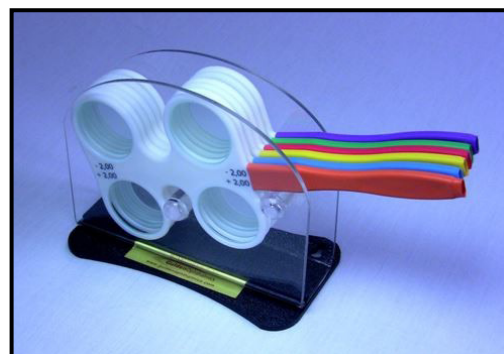
11133 – +0.25 & +0.50	\$35.00
11134 - +0.75 & +1.00	\$35.00



6 Flipper Holder

- New Design!
- Holds up to 6 flippers
- Desk or wall mountable

11122 - \$25.00



Color Flipper Set

- Six standard Powers
- Color coded
- Easy to identify power

11123 – \$120.00



Flippers

- Measure 8 ½" long by 3 ½" wide
- Made of durable plastic with glass lenses

11132 – (4 lens) \$25.00

Trial Lenses / Flippers



Raff Level Trial Flipper

- Balance prescriptions with a level to eliminate off axis rotation
- Use to balance cylinder and prismatic corrections

15156 – \$39.00



Child Trial Frame

- Holds 3 lenses in front and 1 lens behind the frame
- PD fixed at 56mm

11153– \$79.00



Pediatric Trial Frames

- PD fixed at 48mm
- Holds 2 lenses in front
- Frame made of flexible material

11154– \$59.00



Universal Trial Frame

- Holds 3 lenses in front and 1 lens behind the frame
- PD range 24mm-40mm on each side
- Fully adjustable

11151– \$105.00



Universal Trial Frame LW

- Holds 3 lenses in front and 1 lens behind the frame
- PD range 27mm-33mm on each side
- Fully adjustable

11152– \$105.00



Trial Lens Multi-Pinhole Occluder

- 5 pinhole sizes from 8mm to 1.5mm
- The smaller pinholes provide routine acuity testing while the larger pinholes provide for testing suspected reduced vision

15104– \$5.00

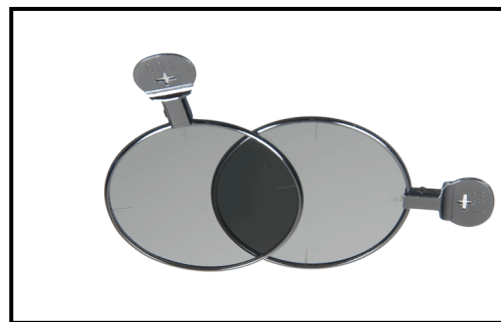
Trial Lenses / Flippers



Premium Trial Frame

- Hold 3 trial lenses in the front and 2 lenses behind the frame
- Adjustable PD (50-80mm)
- Full rotation (360 degrees)
- Temple length and inclination are adjustable
- Vertex distance scale located on temples

11155– \$199.00

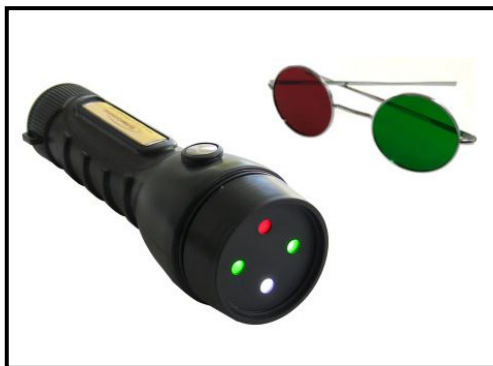


Polarized Trial Lens

- Polarized trial lenses to be used in trial frames

11149– \$30.00

Vision Screening Tools



LED Worth Four Dot Test

- Durable quality
- Reversible red and green glasses
- Batteries included

15304– \$40.00



Optokinetic Drum

- Test for nystagmus
- Measure 4" high by 6" diameter
- Used for adult or children

15360– \$140.00



Red & Green Wrap Around Glasses

- Stylish attractive design
- No side light interference
- Snug fit around head

15316 – Adult \$16.00

15317 – Child \$15.00

15318 – Adult Reverse* \$16.00

15319 – Child Reverse* \$15.00

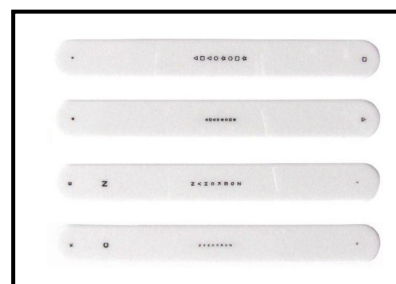
*Red lens on left eye



Adult Screening Kit

- Excellent for vision therapy
- Includes eye alignment near card, maddox rod, fixation sticks, chronister pocket acuity card, and a reusable penlight

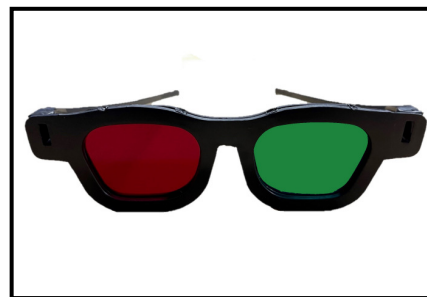
15310– \$72.00



Fixation Sticks

- Used for detailed accommodation stimulation targets
- UV Printed ink markings
- Precisely calibrated for saccade testing

15302– 4 Pack \$22.00

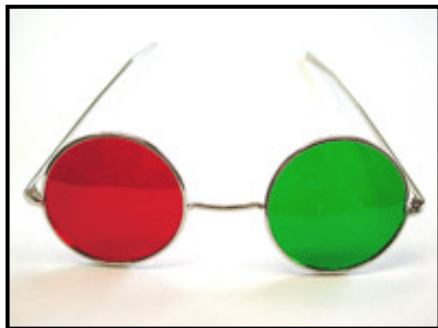


Red & Green Black Frame Glasses

- Accurate color canceling
- Used for accurate cancellation of The Worth 4 Dot, The Three Character Test, The Lancaster Red-Green Tests, and The Hess Screen Tests colors

15320– 6 Pack \$54.00

Vision Screening Tools



Red & Green Metal Frame Spectacles

- Reversible metal frame
- Used for accurate cancellation of The Worth 4 Dot, The Three Character Test, The Lancaster Red-Green Tests, and The Hess Screen Tests colors
- Comes in a soft silk pouch

15105– \$19.00



Tangent Screen

- Provides a very accurate method of charting the central and para-central field of vision
- Includes screen, wand and test object

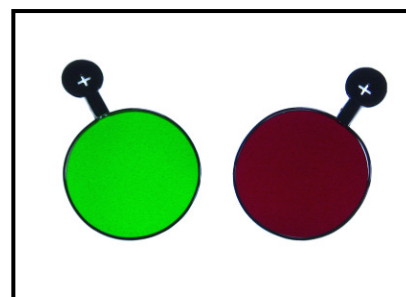
11200– \$195.00



Maddox Phoria Measure

- Combines large 25mm aperture, a red maddox mounted perpendicular to the handle in a 10PD prism in a rotating disc with knurled edge
- Designed to measure anisophoria
- Comes in a leather pouch

12136– \$79.00



Red and Green Trial Lenses

- Perform a variety of tests with these trial frame inserts

11148 – \$19.00

Vision Therapy Tools



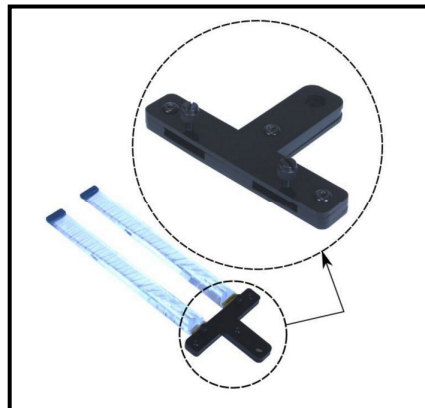
Binocular Vision Assessment Kit

- These items are identical to those used in all of the research performed by the Convergence Insufficiency Treatment Trial (CITT) group

Kit Includes:

- (1) Black Occluder (SKU: 12112)
- (1) Vergence Facility Stick Prism (3/12 diopter) (SKU: 11108)
- (1) +/- 2D Flipper (SKU: 11132)
- (1) Accommodation Rule with vertical letter card (SKU: 15150)
- (1) BV-15 Vertical Prism Bar and B-16 Horizontal Prism Bar Set (SKU: 11314)
- (1) Fixi-Tic (Includes vertical letter fixation stick with 40cm cord) (SKU: 15112)

15329 – \$329.00

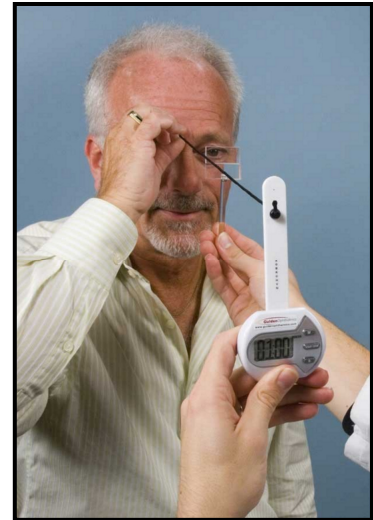


Yoked Prism Bar Holder and Kit

- Used to quickly determine a patient's yoked prism prescription
- Sold individually (holder only) or with two horizontal prism bars
- Note: The holder will only accommodate Gulden prism bars

11118 – Holder only \$30.00

11119 – With two prism bars \$229.00



Fixi-Tic, the Fixation Stick Timer

- Used to time vergence facility tests
- Beeps once one minute is over
- Sold as part of the Binocular Vision Assessment Kit or on its own

15112 – \$40.00



OculoMotor Assessment Tool (OMAT)

- Used for vergence and saccade testing
- Snaps together with strong magnetic connection
- Correct distances for VOMS protocol
- Comes with durable hard case

18009 – \$99.00

225 Cadwalader Avenue
Elkins Park, PA 19027-2020
215-884-8105

Fax 215-884-0418

e-mail: info@guldenophthalmics.com
www.guldenophthalmics.com