

# 2021 CATALOG



225 Cadwalader Avenue  
Elkins Park, PA 19027-2020  
215-884-8105  
Fax 215-884-0418  
e-mail: [info@guldenophthalmics.com](mailto:info@guldenophthalmics.com)  
[www.guldenophthalmics.com](http://www.guldenophthalmics.com)

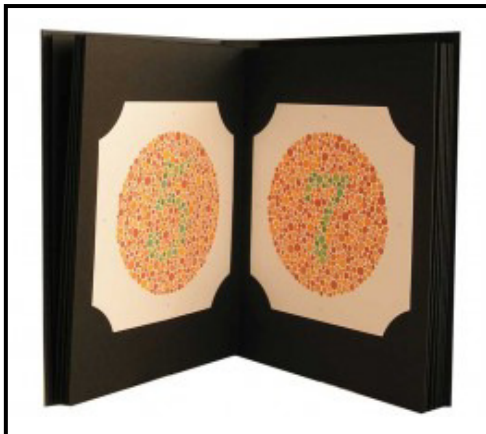
## Color Vision



### HRR Pseudoisochromatic Plates

- Congenital and Acquired Testing

15251 - \$219.00



### Ishihara 14 Plate Book

15177 - \$145.00

### Ishihara 24 Plate Book

15121 - \$189.00

### Ishihara 38 Plate Book

15125 - \$210.00



### Magnetic Color Vision Tests

- Munsell Color System
- Includes "C" Daylight Glasses
- Easy to use Magnetic Wand

### Magnetic Farnsworth Dichotomous D-15

15106 - \$199.00

### Magnetic Lanthony Desaturated D-15

15107 - \$199.00

### Magnetic Combination D-15 Color Test

15108 - \$369.00



### "C" Daylight Glasses™

- Corrects Normal Incandescent Light to Daylight Illumination
- Precise Type "C" Illumination
- Provides Accurate Color Test Results
- Compatible with All Color Tests

15115 - \$45.00

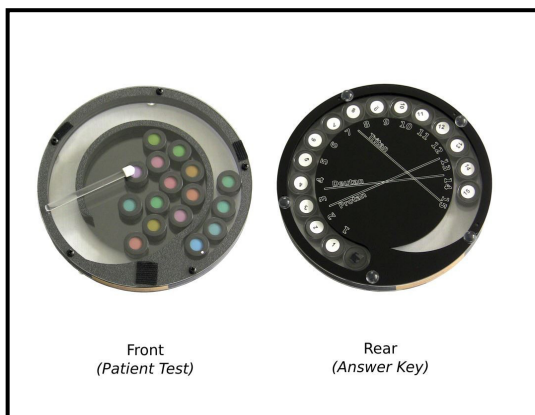
## Color Vision



### Farnsworth Lantern Flashlight

- 9 Interchangeable Filters
- Accurate
- Inexpensive Substitute for the original Farnsworth Lantern test
- Portable

15171 - \$199.00



### Circular Magnetic D-15 Test

- Munsell Color System
- Answer key on rear makes grading convenient
- Available in Farnsworth (saturated chips) and Lanthony (de-saturated chips)

15109 (Saturated) - \$209.00

15110 (De-saturated) - \$209.00



### Farnsworth Dichotomous D-15 Lanthony Desaturated D-15

- Munsell Color System
- Quick and Easy to remove
- Includes "C" Daylight Glasses

Saturated 15126 - \$159.00

Desaturated 15127 - \$159.00

### Combo D-15 Color Test

Farnsworth / Lanthony 15130 - \$299.00

225 Cadwalader Avenue  
Elkins Park, PA 19027-2020

215-884-8105

Fax 215-884-0418

e-mail: [info@guldenophthalmics.com](mailto:info@guldenophthalmics.com)

[www.guldenophthalmics.com](http://www.guldenophthalmics.com)

## Sterile Eye Spheres and Conformers



### PMMA Orbital Implants – (Sterile)

14250 – 10mm	\$54.00
14251 – 12mm	\$54.00
14252 – 14mm	\$54.00
14253 – 16mm	\$54.00
14254 – 18mm	\$54.00
14255 – 20mm	\$54.00
14256 – 22mm	\$54.00



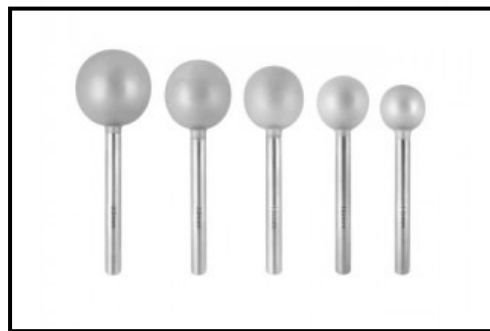
### PMMA Eye Conformers – (Sterile)

14264 – Small No Holes	\$54.00
14265 – Medium No Holes	\$54.00
14266 – Large No Holes	\$54.00
14267 – Small with Holes	\$63.00
14268 – Medium with Holes	\$63.00
14269 – Large with Holes	\$63.00



### PMMA Orbital Implant Sizer Kit Disposable (Non-Sterile)

14170 – 14, 16, 18, 20mm Set \$49.00



### Stainless Steel Orbital Implant Sizer Kit Reusable Autoclavable (Non-Sterile)

14171 – 14, 16, 18, 20, 22mm Set \$390.00

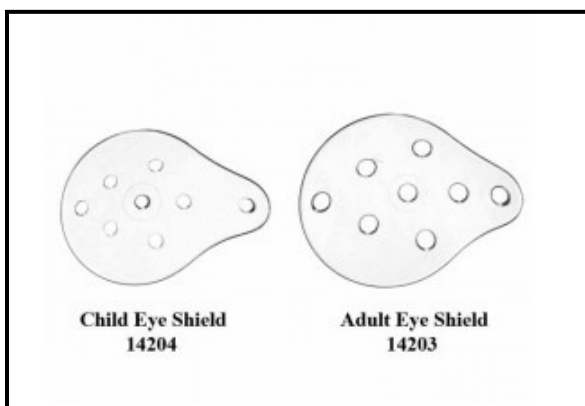


### Emergency Eye Shields

- Made of Polycarbonate Shatterproof Material
- Universal shape for use with either eye
- Instructions for use on outer surface of Shield

14205 – Pack of 100 \$218.00

## Eye Conformers / Implants / Shields



### Polycarbonate Eye Shields

- Shatterproof Polycarbonate Plastic

14203 – Adult 12 Pack \$25.00

14204 – Child 12 Pack \$40.00



### Black Eye Patch

- Elastic Strap
- Leather Trim

14001 – \$9.00



### Dual Foam Lined Eye Shields

- Soft Lined Foam Latex Free
- Comfortable Adjustable Headband
- Shatterproof Polycarbonate Plastic

14102 – \$7.00

14103 – 12 Pack \$44.00



### Cox II Laser Eye Shields

- For Protection of the Patient / Personnel
- Non-reflective Surfaces Disperse Laser Light
- Used for Skin Resurfacing or Incision Procedures

21261 – Extra Small \$127.00

21262 – Small \$127.00

21263 – Medium \$127.00

21266 – Large \$127.00



### Autoclavable Ocular Shields

23204 – \$77.00



### Durette III External Eye Laser Shields

- Includes 1 assembled pair of external shields and extras. Total parts comprise of 2 metal cups, 4 nasal & 4 temporal plastic attachments, 2 elastic headbands and a medium plastic sterilizing tray

21445 – \$299.00



## Eye Conformers / Implants / Shields



### Durette IV External Eye Laser Shields

- Includes 1 assembled pair of external shields and extras. Total parts comprise of 2 metal cups, 2 nasal & 2 temporal metal attachments, 2 elastic headbands and a medium plastic sterilizing tray

21555 – \$299.00



### Symblepharon Rings

- The Symblepharon Rings prevent adhesions and shortening or retraction of the fornices and cul-de-sacs without touching the cornea

14345 – Small \$80.00

14346 – Medium \$80.00

14347 – Large \$80.00



### Silicone Suction Cups

- Traditional large silicone suction cups for extracting conformers and laser shields

23012 – 12 Pack \$40.00



### Durette Plastic Eye Goggles

- Used with light that is usually created by fluorescent lamps, bright LEDs or diachronic filament bulbs. Visible violet light in the range of 405-420

23442 – \$81.00



### Jaeger Lid Plate

- Acrylic jaeger lid plate, concave with small & medium ends 22 – 25mm

16102 – \$20.00



### Autoclavable Jaeger Lid Plate

- Autoclavable jaeger lid plate in Black

23293 – \$52.00

# Consumables



## Chinrest Paper

- 1-3/4 x 5-1/8

15326 – 500 Pack \$7.00



## Schirmer Tear Flow Strips

- Printed mm scale
- Sterile strips

152T5 – 100 Pack \$12.00

**GuldenOphthalmics**

225 Cadwalader Avenue  
Elkins Park, PA 19027-2020

215-884-8105

Fax 215-884-0418

e-mail: [info@guldenophthalmics.com](mailto:info@guldenophthalmics.com)

[www.guldenophthalmics.com](http://www.guldenophthalmics.com)

## Contact Lens



### Contact Lens Check & Keratometer Calibrator

- Easily mounts on most keratometers & Slit Lamps
- Eliminates a need for a radiuscope
- Check for warping or any changes to the base curve & calibrate your keratometer

15179 - \$49.00



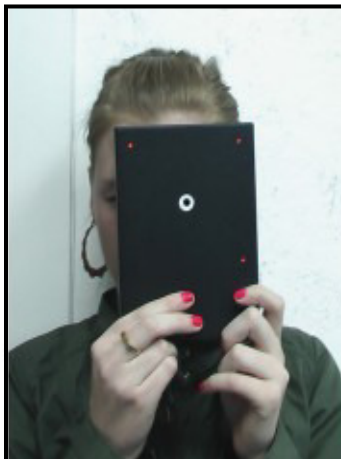
### Contact Lens Polisher Kit

- Cordless & easy to use
- Fits comfortably in your hand
- 1,400 rpm motor
- Includes flat and cone shaped foam polishing pads

15172 - \$99.00



## Diagnostics



### Automated Confrontation Test

- Automated LED gross confrontational visual field tester
- Fast and accurate
- Both eyes can be tested in less than a minute

17002 - \$199.00



### Eye View™ Visualizing Scope

- Gives patients a fascinating view of floaters and cataract opacity in their eyes
- Good educational tool
- Easy to use

15220 - \$39.00



### Dual Luedde Exophthalmometer

- Small compact size
- Hard shell case included

16103 - \$125.00



### R-50 Near Point Accommodation Rule

- Easy to read
- Includes acuity cards
- Durable

15150 - \$69.00

### Accommodation Cards (5 Pack)

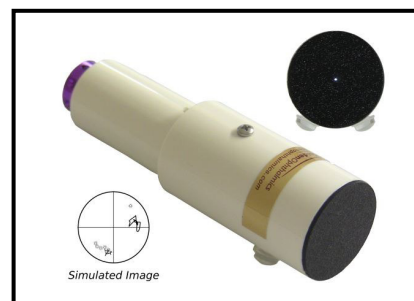
15201 - \$15.00



### Luedde Exophthalmometer

- Pocket size
- Accurate parallax correction
- Protective leather case included

16104 - \$30.00



### Idrees Floaterscope

- Measure floater quantity and location before and after vitreolysis
- Convenient telescoping design

18008 - \$69.00

## Diagnostics



### Neutral Density Bar

- Six standard ND levels
- Convenient "prism bar" format
- Compact, slides into pocket
- Use to grade APD

15118 - \$60.00



### Stereo Acuity Test

- Includes adult and pediatric polarized viewers
- Graded circle test from 400 sec to 20 sec
- Answer key on back cover

15211 – Fly \$197.00

15219 – Butterfly \$197.00



### Wraparound Polarized Glasses

- Adult and child sizes
- Used with the stereo fly and Butterfly tests

15199 – Child \$15.00

15200 – Adult \$16.00



### Retinoscopy Racks w/ Compass

- High quality lenses
- Plus (+) and minus (-) lenses
- Axis Compass

15160 - \$120.00



### Retinoscopy Racks

- High quality lenses
- Plus (+) and minus (-) lenses

15161 - \$115.00



### Large Aperture Retinoscopy Racks

- High quality lenses
- Plus (+) and minus (-) lenses
- 6 piece set

15162 - \$39.00

## Diagnostics



### Digital PD Ruler

- Accurate and responsive digital display
- Automatic shut off when placed on level surface

17005 - \$129.00



### Digital Pupilometer w/ Vertex Distance

- Measures binocular and monocular pupillary distance (PD)
- Automatic standby

17006 - \$249.00



### Reusable Penlight

- 2 "AAA" batteries included

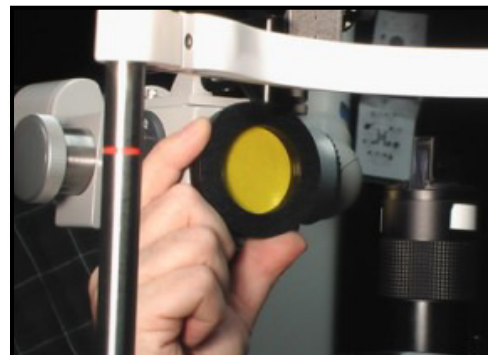
15116 - \$5.00



### Diagnostic Eye Template

- Individual eye components for patient education

15178 - \$8.00



### Slit Lamp Yellow Filter

- Used to detect subtle staining
- Better visualization of RGP fluorescein patterns

15192 - \$49.00

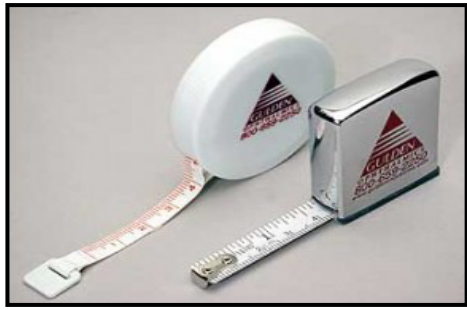


### Large Neutral Density Bar

- Six standard ND levels
- Convenient "prism bar" format
- Lighter than competitor versions
- Quantifies APD accurately

15117- \$85.00

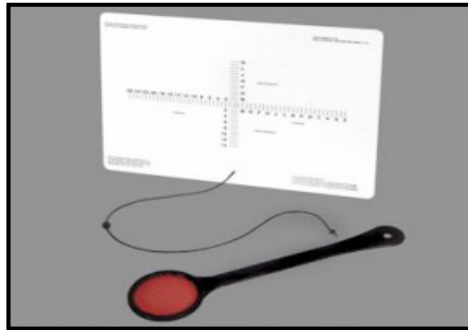
## Diagnostics



### Plastic Tape Measure

- Light weight, pocket size
- Spring retractable

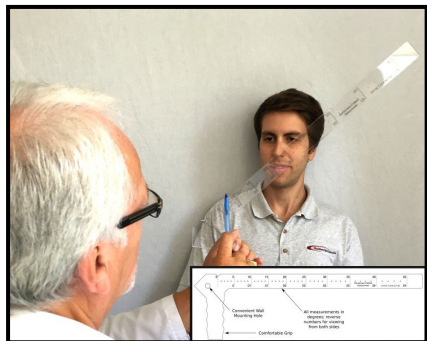
16105 - \$5.00



### Eye Alignment Near Card

- Quantitative test
- Measures vertical & horizontal deviation
- Portable & easy to use
- Maddox included

15114- \$30.00



### Bardenstein-Patfield Diplopometer

- Quantify diplopia
- Track the progression of conditions such as thyroid myopathy, orbital abscess, tumors, or microvascular cranial neuropathies

12138 – \$59.00



### Ohlson VSEF

- The yellow filter increases the visibility of the fluorescein pattern
- The red lens increases the visibility of lissamine green staining on the bulbar conjunctiva
- Leather Pouch

12135 - \$49.00



### Phoropter Roto Chart

- Astigmatic Wheel
- English & Spanish continuous text
- Cross Hatch target

15151 - \$49.00



## Drop Trays / Organizers



### Disposable Spray Caps

- Replaceable caps for standard ophthalmic drop bottles
- Use for Mydriatic, Anesthetic, etc

15195 - 12 Pack \$22.00



### Strip Caddy/Disposal Kit

- Convenient & safe way to dispose strips
- Small compact design saves space
- Strips and disposable bags included

15205 - \$54.00



### Opticare Eye Drop Dispenser

- Helps patients use their eye drops effectively
- Holds the eye lid open
- Available in 5 colors

15196- \$22.00



### Tip Cleaner Caddy

- Quickly disinfects tonometer tips
- Removable, refillable cup
- Easily maintained by a technician
- Keeps drops organized

15169- \$29.00



### Caddy 6

- Keeps drops organized
- Rear key holes for wall mounting
- Measures 3"x5"x1"

15168- \$17.00



### Opticare Eye Drop Dispenser (10 Pack) Display

- Great counter display

15197- 10 Pack \$197.00



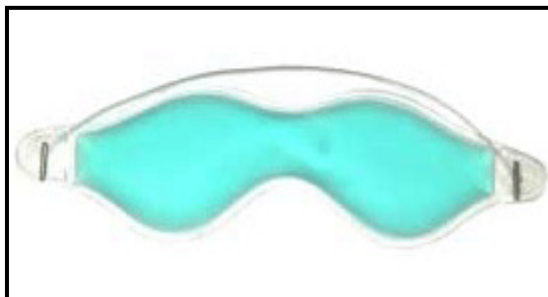
## Drop Trays / Organizers



### Dry Eye/Lagophthalmos Kit

- Kit includes moisture goggles for day
- Headband device to keep eye/eyes closed at night
- Eliminates the need for taping
- Storage case included

15170 - \$32.00



### Gel Eye Mask 2 Pack

- Easy to heat or cool
- Soothes tired eyes

14225 – 2 Pack \$13.00



### Magic Touch Eye Drop Applicator

- Simplifies the application process
- Safe and sanitary

15198 – \$12.00



### Lasik Eye Guard

- Very comfortable, adjustable
- Anti-fog ventilation holes
- Logo imprinting available

15124 – 10 Pack \$99.00

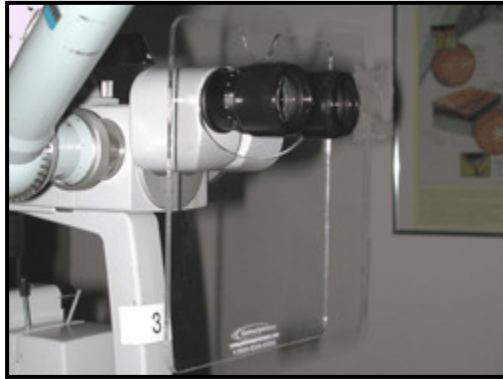


### Occluder Caddy Set

- Comes with six popular occluders
- Very compact design fits anywhere

12108 – \$90.00

## Instruments & Accessories



### Slit Lamp Breath Shield

- Provides a barrier between your patients and you
- Easy to install and clean
- Size – 7.5" Long x 5.5" Wide.

14226 - \$28.00



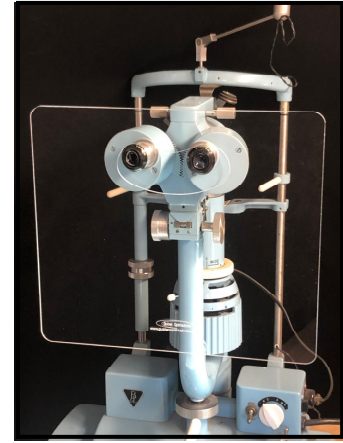
### MG Expressor Kit

- Performed easily on outer lid with or without slit lamp
- Immediate patient relief post procedure
- Includes 2 gel eye masks, lid plate tool, expressor roller tool & 10 disposable expressor covers

16111 - \$139.00

### Roller Covers

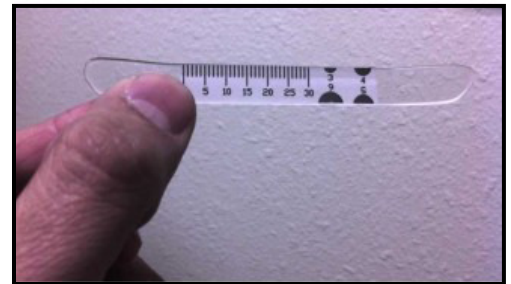
16C11 - \$10.00 (25 Pack)



### Large Slit Lamp Breath Shield

- Provides a barrier between your patients and you
- Easy to install and clean
- Size – 11.5" Long x 10" Wide

14229- \$38.00



### Gutierrez MG Expressor Lid Plate PLUS

- Comfortable for the doctor in a natural position when expressing the meibomian glands
- 30mm scale used to measure pupil size, iris diameter and other measurements

16P11 - \$20.00

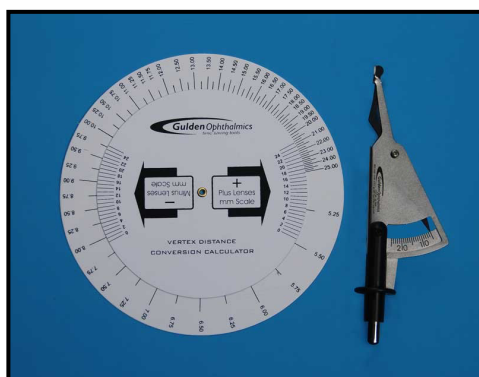


### Gutierrez MG Expressor Lid Plate S.S.

- Comfortable for the doctor in a natural position when expressing the meibomian glands
- Can be sterilized in a autoclave

16S11 - \$59.00

## Instruments & Accessories



### Distometer Set

- Used to accurately measure the vertex distance between the patient's cornea and the lenses in eyeglasses or trial frames
- Metal distometer
- Conversion calculator disc

16127 - \$99.00



### Cataract / IOL Model Lens Stabilizer

- Used to help stabilize the cataract or IOL lenses.
- Easily slides over models post
- Made of a clear acrylic

15263 - \$15.00



### Cornea Model Lens Stabilizer

- Used to help stabilize the cornea lenses.
- Easily slides over models post
- Made of a clear acrylic

15264 - \$15.00



### Slit Lamp Elbow Rest

- Keeps users arm & hand steady for holding lenses and filters
- Elevates from 9 to 14.5 cm
- Twist to lock position

15194- \$45.00



### MagniTouch 3x LED Magnifier

- Useful for low vision patients
- Use in restaurants and low light settings
- Includes case, cleaning cloth, and batteries

11120 - \$49.00



### Digital PD Ruler Breath Shield

- Provides a barrier between your patients and you
- Attaches with dual-lock velcro

14230 - \$28.00

225 Cadwalader Avenue  
Elkins Park, PA 19027-2020

215-884-8105

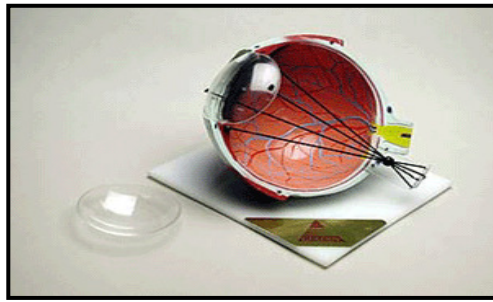
Fax 215-884-0418

e-mail: [info@guldenophthalmics.com](mailto:info@guldenophthalmics.com)

[www.guldenophthalmics.com](http://www.guldenophthalmics.com)



# Models



## Astigmatism Eye Model

- Demonstrates Astigmatism
- Myopia
- Hyperopia
- Refraction error

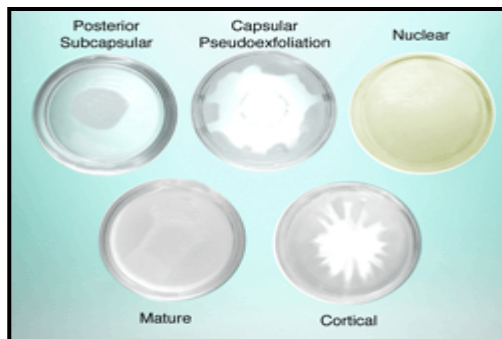
15123 - \$99.00



## Cataract Eye Model

- Includes 5 interchangeable lenses
- Subcapsular
- Capsular
- Mature
- Cortical
- Nuclear

15129 - \$99.00



## Cataract Lenses

- Includes 5 interchangeable lenses
- Subcapsular
- Capsular
- Mature
- Cortical
- Nuclear

15119 - \$29.00



## Cornea Model

- Includes 5 interchangeable corneas
- Keratoconus
- Bullous Keratopathy
- Fuch's Endothelial Dystrophy
- Recurrent Corneal Erosion
- Normal cornea

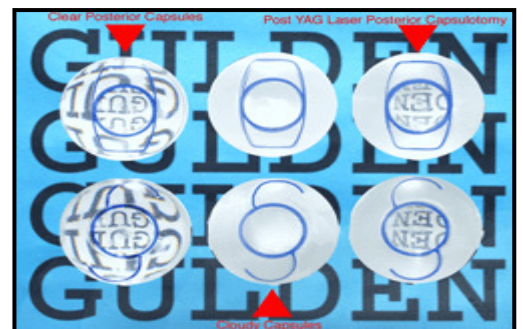
15182 - \$99.00



## IOL Eye Model

- Includes 6 interchangeable corneas
- IOL and Toric implants of clear posterior capsule, cloudy capsule & post YAG posterior capsulotomy

15149 - \$99.00

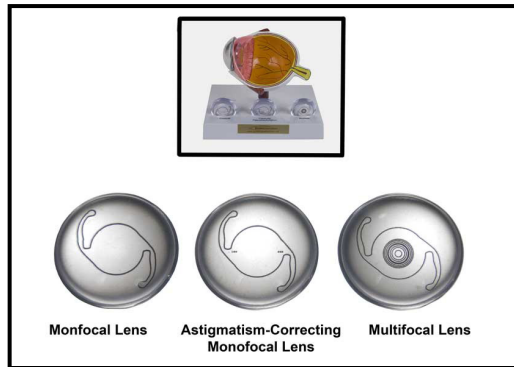


## IOL Lenses

- IOL and Toric implants of clear posterior capsule, cloudy capsule & post YAG posterior capsulotomy

15147 - \$49.00

# Models



## Premium IOL Options Set

- Helps educate patients on today's IOL options.
- Set of 3 interchangeable lenses, monofocal, astigmatism-correcting monofocal, and multifocal.

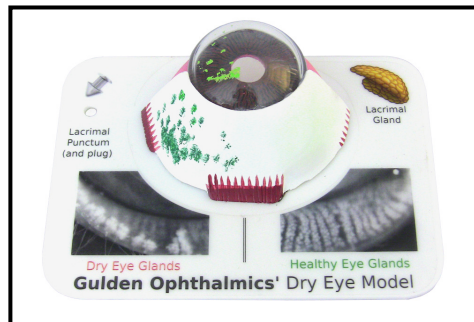
15148 - \$29.00



## Complete Eye Model

- Provides a unique opportunity to demonstrate myopia and hyperopia through adjustment of the focal rays

15152 - \$99.00



## Dry Eye Model

- Educate your patient on the causes, diagnostic tests, and treatment options of dry eye disease.

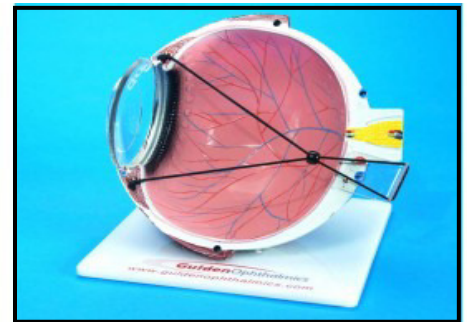
15183 - \$89.00



## Small Eye Model

- Assists the ophthalmic professional in educating patients in the anatomy of the human eye

15222 - \$89.00



## Lasik Eye Model

- Assists the ophthalmic professional in educating patients about Lasik surgery procedures

15120 - \$99.00



## Detachment Eye Model

- Assists the ophthalmic professional in educating patients in the detachment of either the vitreous or the retina

15163 - \$99.00



# Models



## Siepser Vitreous Floater Demonstrator

- Quickly & easily explain "shadowing"
- Measures 3 inches in diameter

15153 - \$49.00



## Siepser Hemorrhage Demonstrator

- Demonstrates the effects of vitreous hemorrhage & head position

15224- \$49.00



## Timberlake Training Eye Model

- Improve the teaching of funduscopy skills
- Changeable pupil sizes
- Multiple retinal pathologies

15173 - \$99.00



## VTD Model

- AMD
- Diabetic Retinopathy
- Glaucoma

15223 - \$99.00



## Siepser Dry Eye Model

- Demonstrates the effects of dry eye
- Easily explain the loss of clarity that occurs due to corneal haze
- Helps explain hyperemic conjunctiva associated with the roughness and irritation of the cornea

15226 - \$99.00



## Retinoscopy Practice Eye

- Ideal for practicing retinoscopy and teaching optical fundamentals
- Comes with solution shroud and case

15174 - \$99.00

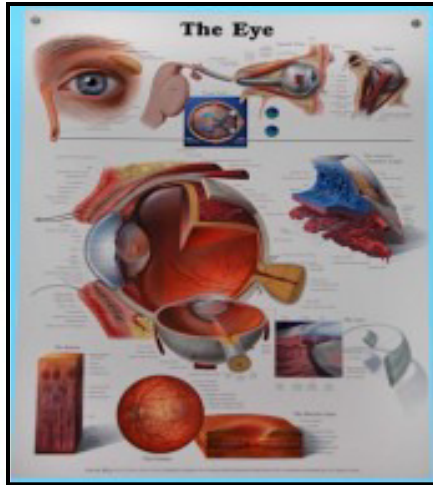
**GuldenOphthalmics**

225 Cadwalader Avenue  
Elkins Park, PA 19027-2020  
215-884-8105

Fax 215-884-0418

e-mail: [info@guldenophthalmics.com](mailto:info@guldenophthalmics.com)  
[www.guldenophthalmics.com](http://www.guldenophthalmics.com)

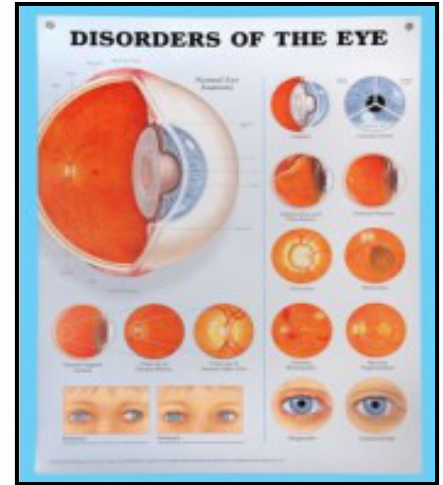
# Educational Posters



## Eye Poster

- Highly instructive and useful for both patients and office staff
- Measures 20"x 26"

15254 - \$29.00



## Eye Disorder Poster

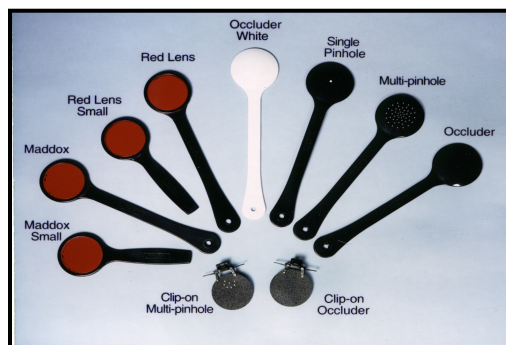
- Shows a detailed, clear cross section of the eye
- Measures 20"x 26"

15255 - \$29.00

**GuldenOphthalmics**

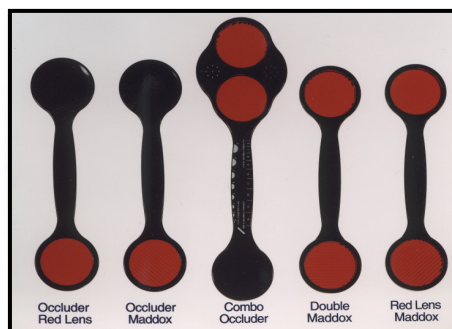
225 Cadwalader Avenue  
Elkins Park, PA 19027-2020  
215-884-8105  
Fax 215-884-0418  
e-mail: [info@guldenophthalmics.com](mailto:info@guldenophthalmics.com)  
[www.guldenophthalmics.com](http://www.guldenophthalmics.com)

## Occluders



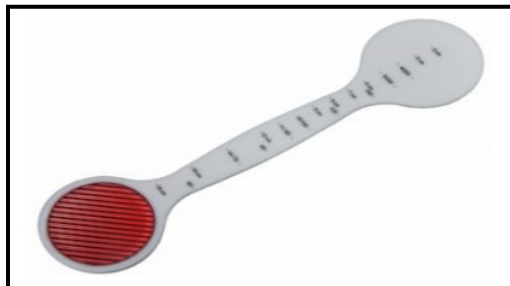
### Single Occluders

12110	Occluder Black (short)	\$9.00
12112	Occluder Black (long)	\$10.00
12113	Maddox (long)	\$13.00
12114	Maddox (short)	\$11.00
12115	Red Lens (long)	\$12.00
12116	Red Lens (short)	\$11.00
12117	Occluder White	\$10.00
12127	Clip-on Multiple Pinhole	\$10.00
12128	Clip-on Occluder	\$9.00
12129	Single Pinhole	\$12.00
12130	Multiple Pinhole	\$15.00
12132	Short Multi Pinhole	\$13.00



### Double Occluders

12121	Occluder & Red Lens	\$16.00
12122	Occluder & Maddox	\$16.00
12124	Double Maddox	\$18.00
12125	Maddox Red Lens	\$17.00
12126	Combo Occluder	\$29.00



### Lewerenz Accommodation Maddox

- Calibrated scale in both centimeters and dioplers

12137 - \$29.00



### Lorgnette Occluder

- Easy to use
- Suitable for any age
- Saves time

12133 - \$19.00



### Spielmann Occluder

- For clinic or office
- Eliminates retinal rivalry
- Enhances visual acuity testing

12120 - \$29.00



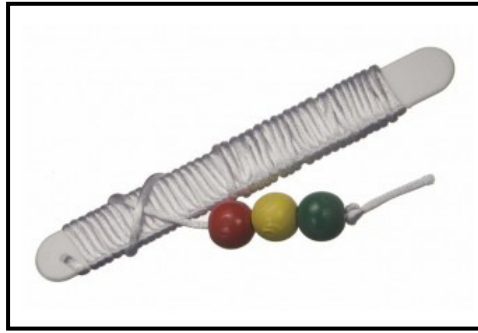
### Berens Pinhole Test

- Combines a standard pinhole and an eye dominance test

15102 - \$6.00



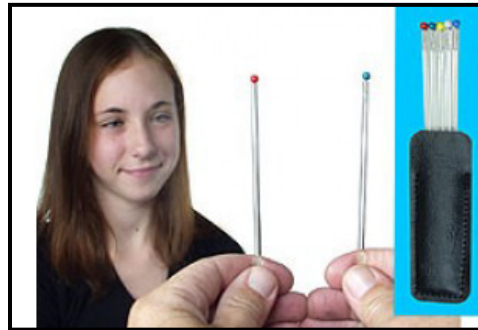
## Pediatric Tools



### Brock String

- Used to enhance convergence ability

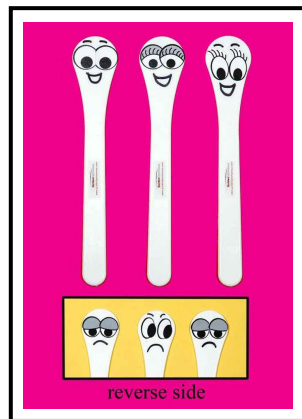
15133 - \$7.00



### Color Fixation Sticks

- Test ocular motility
- Test confrontation visual fields
- Case included

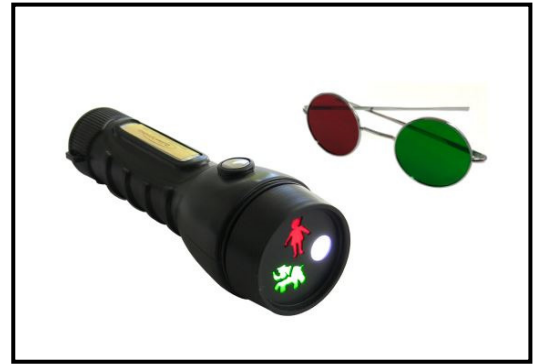
15176 - \$20.00



### Face Fixation Sticks

- Set of three kid friendly fixation targets
- Each stick is double sided

15315 - 3 Pack \$17.00



### LED Three Character Test

- Durable quality
- Reversible red and green glasses
- Batteries included

15305 - \$49.00



### Pediatric Fixation Pack

- Set of four fixation targets
- Perfect for young and non verbal patients
- Penlight included

15132 - \$20.00

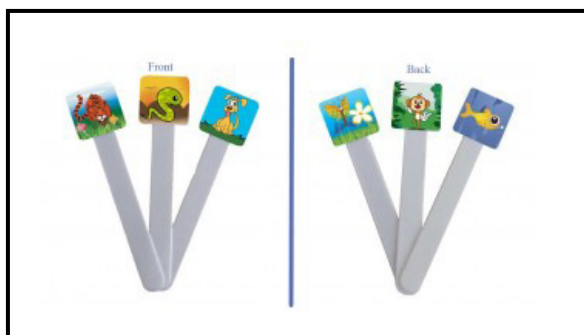
## Pediatric Tools



### Pediatric Fixation Sticks 3 Pack

- New and improved UV printed images
- 12 different colored images
- Calibrated for near vision

15314 – 3 Pack \$17.00



### Fixi-Stix 3 Pack

- 3D wiggle pictures
- Stimulation targets for the young patient
- Combination of 6 different images

15312 – 3 Pack \$21.00



### Pediatric Fixation Wand

- Aids in visual testing and therapeutic situations

15215 – \$10.00



### Flashing Butterfly Fixation Stick

- Simulation targets for the young patient
- On / Off button

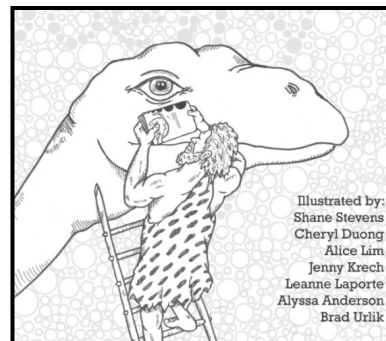
15203 – \$12.00



### Flashing Fixation Sticks 2 Pack

- Simulation targets for the young patient
- Easy twist on and off
- Replaceable watch battery

15325 – 2 Pack \$20.00



### Optopoetry Book

- Fun poems and drawings all about vision!

19000 – \$20.20



## Pediatric Tools



### Red and Green Pediatric Glasses

- Used for worth 4 dot and 3-character tests
- Designed for children

15321 – 6 Pack \$38.00



### Hopping Accommodative Facility Card (12)

- Vision therapy activities designed for use with accommodative & ocular motor therapies

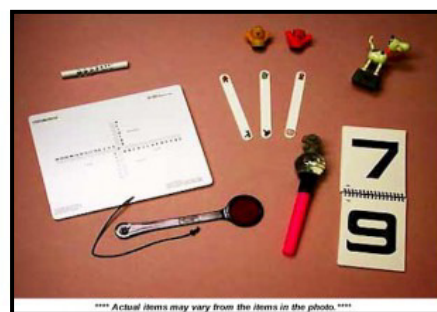
15331 – \$25.00



### Amblyopia Rock Cards (Set of 20)

- Reusable with erasable markers
- Comes with instructions and red/green spectacles

15334 - \$39.00



### Pediatric Screening Kit

- Includes a eye alignment near card with Maddox rod, pediatric chronister pocket acuity card chart, and pediatric fixation pack with re-useable penlight

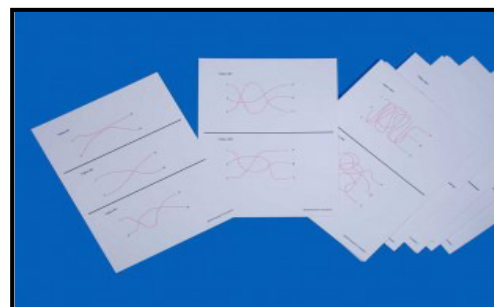
15311 – \$89.00



### Red/Green Number Search 1-50 & 1-100 (20)

- Reusable with erasable markers
- Includes instructions and red/green spectacles

15335 - \$39.00

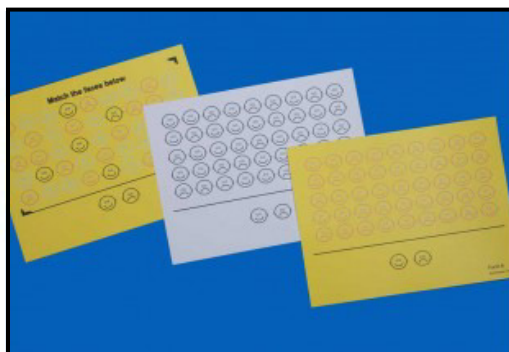


### Red Line Tracing Cards (Set of 26)

- Vision therapy activities designed for use with accommodative & ocular motor therapies
- Includes instructions and red/green spectacles

15336 - \$49.00

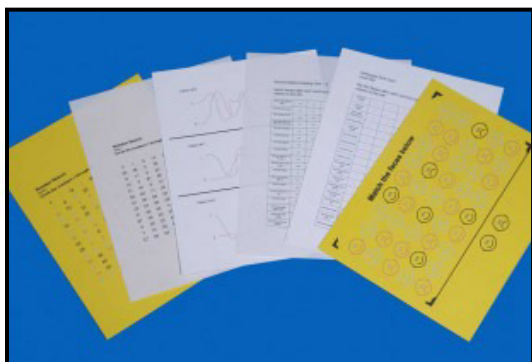
## Pediatric Tools



### Face Form (Set of 3)

- Activities are designed to be accommodative demanding & interactive
- All cards are laminated (coated)

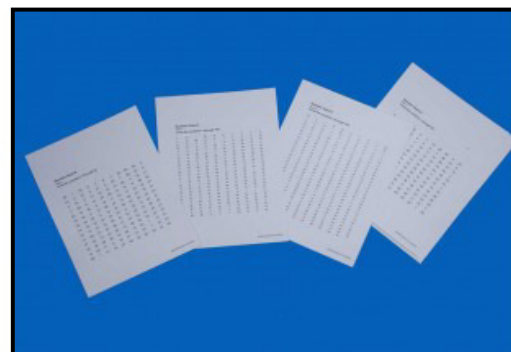
15332 - \$15.00



### Hopping Vision Therapy Cards

- Complete set of our vision therapy cards shown on page 22 & 23

15330- \$175.00



### Number Search 1-50 & 1-100 (Set of 20)

- Includes instructions and red/green spectacles
- All cards are laminated (coated)

15333 - \$39.00



### Pediatric Chronister Pocket Acuity Chart

- Quick and easy to use
- Laminated & pocket size

15131- \$30.00

## Practice Eyes



### I-BORG Practice Face

- Realistic shape & dimensions
- Central corneal thickness 0.5mm
- Peripheral corneal thickness 0.8mm

17102 - \$149.00



### Phak-I

- Disposable Eyes
- Central corneal thickness 0.5mm
- Peripheral corneal thickness 0.8mm
- 8mm "dilated" pupil

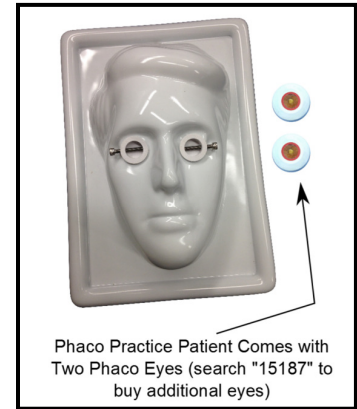
17004 - \$80.00 (4 pack)



### Siepsler Slit Suture Kit

- Easy to learn
- Includes full instruction video

16110 - \$69.00



### Phaco Practice Patient

- Includes half head to hold the eyes, a plastic tray to contain the head & liquids & a pair of disposable practice eyes

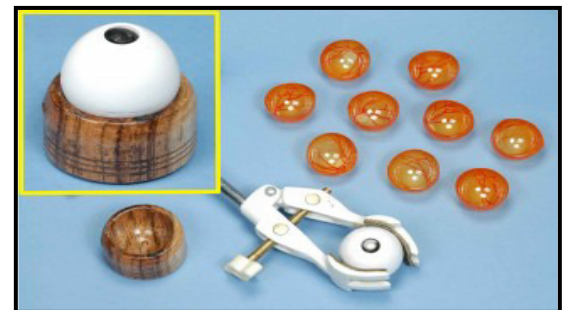
15186 - \$149.00



### Phaco Practice Eyes

- Disposable Eyes
- Easily practice the basic steps of phaco surgery

15187 - \$50.00 (10 pack)



### Reti-Eye

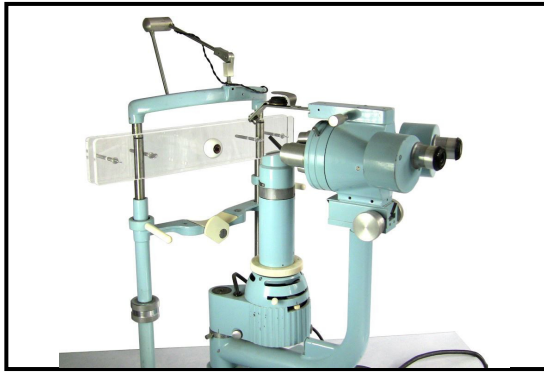
- Practice indirect Ophthalmoscopy & Photocoagulation
- Slit Lamp attachment
- Replacement retinal films available

15207 - \$159.00

15217 - \$44.00 (10 Pack Films)



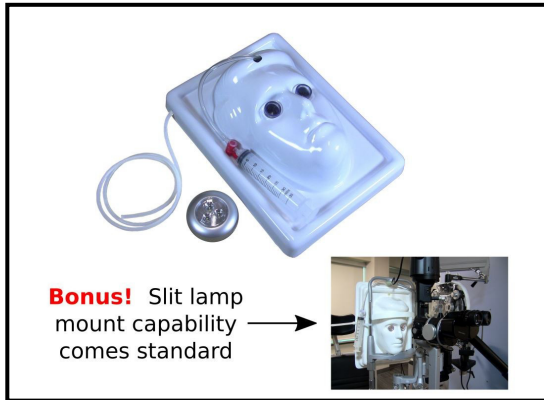
## Practice Eyes



### Silicone Set Up Eye Slit Lamp Holder

- Made of high-quality acrylic
- Attaches to any slit lamp
- Mounting hardware included

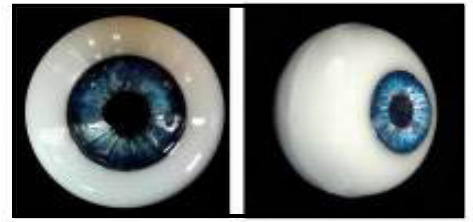
17016 – \$60.00



### Idrees Eye Surgery Practice Head

- Suction mechanism holds animal eyes
- LEDs illuminate fundus
- Easy to clean
- Includes fluid collection tube

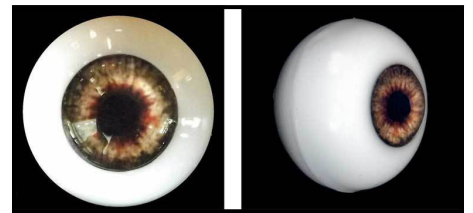
17105 – \$199.00



### Silicone Set-up Eye Blue

- Made of Silicone
- Ideal for training and equipment set-up

17018 – \$35.00



### Silicone Set-up Eye Brown

- Made of Silicone
- Ideal for training and equipment set-up

17017 – \$35.00

## SimulEYES - Surgery Practice Eyes



### YAG Model

- This model provides a cornea-scleral shell for use **with or without a YAG capsulotomy laser lens**.
- Inside is an iris, anterior capsule membrane, an IOL and a **posterior capsule which will respond to Nd:YAG laser treatment**.

17022 – 2 Pack \$100.00

17030 – Slit Lamp Holder (Required for use) \$100.00

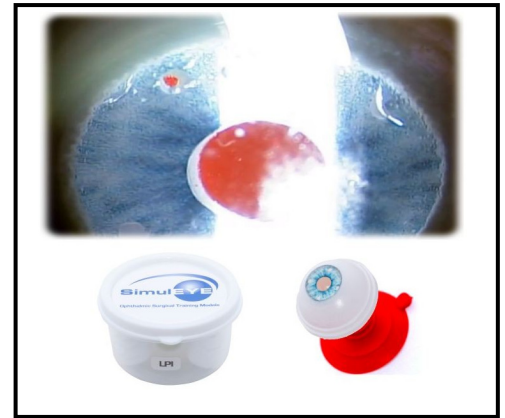


### SLT Model

- This model provides a cornea-scleral shell for use **with an SLT laser lens**.
- Inside is an iris and a pigmented angle structure **which will depigment upon application of an SLT laser treatment**.
- "Champagne bubbles" form with each pulse and increase as the energy is increased.

17025 – 2 Pack \$100.00

17030 – Slit Lamp Holder (Required for use) \$100.00

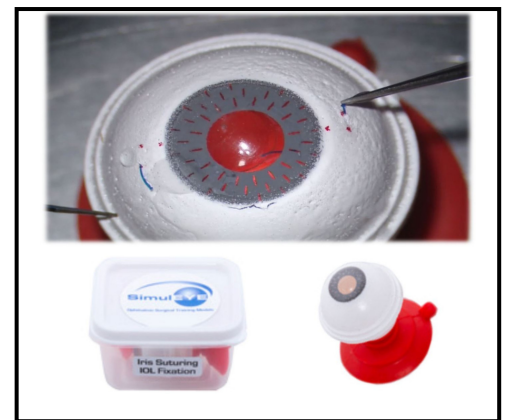


### LPI Model

- This model provides a **cornea-scleral shell** for use **with or without an iridotomy lens**.
- Inside is an iris with **4 treatment areas**. Multiple laser spots need to be delivered in focus in order to break through the iris and create the PI.
- A **red reflex is visible** with retro-illumination upon completion of a successful PI. Realistic laser power settings are utilized.

17028 – 2 Pack \$100.00

17030 – Slit Lamp Holder (Required for use) \$100.00

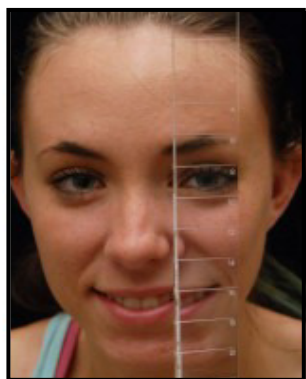


### Iris Suturing and IOL Fixation

- Various IOL fixation techniques can be practiced including **iris suture fixation**, **scleral suture fixation** and the **Yamane intrascleral fixation technique**.
- In addition, **IOL cutting and exchanges** can be practiced.
- Multiple procedures can be performed on each model before the eye is consumed.

17035 – 2 Pack \$150.00





## EZ View Prism Bars

- Improves vectographic results
- Reduces washout and eliminates reversal
- Diopters in corner viewing plan for easier viewing results
- Includes leather pouch
- Available in vertical or horizontal

### 11113 – Small Vertical \$95.00

- 0.5-1-1.5-2-2.5-3-3.5-4-5-6-7-8Δ

### 11116 – Horizontal \$105.00

- 1-2-4-6-8-10-12-14-16-18-20-25-30-35-40-45Δ

### 11117 – Vertical \$105.00

- 1-2-3-4-5-6-8-10-12-14-16-18-20-25-30Δ



## EZ View Prism Bar Sets

- Improves vectographic results
- Reduces washout and eliminates reversal
- Diopters in corner viewing plan for easier viewing results
- Includes 1 horizontal and 1 vertical prism bars
- Horizontal = 1-2-4-6-8-10-12-14-16-18-20-25-30-35-40-45Δ
- Vertical = 1-2-3-4-5-6-8-10-12-14-16-18-20-25-30Δ

### 11314 – Leather Pouches \$208.00

### 11L14 – Hard Molded Case \$208.00



## LB- Large Prism Bars

- Improves vectographic results
- Reduces washout and eliminates reversal
- Includes leather pouch
- Available in vertical, horizontal, or in a set with both

### 11111 – Large Vertical \$155.00

- 1-2-3-4-5-6-8-10-12-14-16-18-20-25Δ

### 11112 – Large Horizontal \$155.00

- 1-2-4-6-8-10-12-14-16-18-20-25-30-35-40Δ

### 11315 – Horizontal/Vertical \$300.00



## Combination Horizontal and Vertical Prism Bar

- Provides accurate measurement of ocular deviation
- Sturdy rails for smooth sliding of the horizontal bar
- Used together or separately
- Includes leather pouch
- Horizontal = 1-2-4-6-8-10-12-14-16-18-20-25-30-35-40-45Δ
- Vertical = 1-2-3-4-5-6-8-10-12-14-16-18-20-25-30Δ

### 11313 – \$220.00

## Prism Sets



### S-16 Prism Set

- Solves the problem of birefringence
- Made of high-quality plastic
- Includes sizes 1/2-1-2-4-6-8-10-12-15-20-25-30-35-40-45-50Δ & Red Lens
- Hard molded case

11L16 - \$165.00



### S-16U Universal Prism Set

- Solves the problem of birefringence
- Made of high-quality plastic
- Includes sizes 1/2-1-2-4-6-8-10-12-15-20-25-30-35-40-45-50Δ & Red Lens
- Hard molded case

11317 - \$180.00



### MS-10 Prism Set with Maddox Rod

- Solves the problem of birefringence
- Includes sizes 1/2-1-2-4-6-8-10-15-20-25Δ & Maddox rod
- Hard molded case

11310 - \$115.00



### S-22 Prism Set

- Solves the problem of birefringence
- Made of high-quality plastic
- Includes sizes 1/2-1-2-3-4-5-6-7-8-9-10-12-14-16-18-20-25-30-35-40-45-50Δ & Red Lens
- Hard molded case

11L22 - \$218.00



### S-22U Universal Prism Set

- Solves the problem of birefringence
- Made of high-quality plastic
- Includes sizes 1/2-1-2-3-4-5-6-7-8-9-10-12-14-16-18-20-25-30-35-40-45-50Δ & Red Lens
- Hard molded case

11323 - \$240.00



### S-4 Prism Set

- Solves the problem of birefringence
- Includes sizes 5-10-15-20Δ & Red Lens
- Hard molded case

11304 - \$48.00

## Prism Sets



### S-8 Prism Set

- Solves the problem of birefringence
- Includes sizes 2 each 5-10-15-20 $\Delta$  & 1 red lens
- Made of high-quality plastic
- Hard molded case

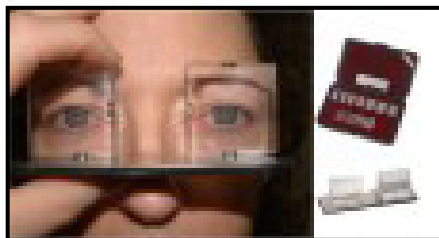
11308 - \$84.00



### S-16 Magnetic Stick Prism Set

- Compact case takes up less counter space
- Strong imbedded magnets attach easily to supplied magnetic handles
- Use as stick prisms or individually
- Includes sizes 1/2-1-2-4-6-8-10-12-15-20-25-30-35-40-45-50 $\Delta$  Red Lens and two magnetic stick handles
- Additional handles available
- Made of high-quality plastic
- Hard molded case

11L17 - \$199.00



### Bishop Alignment Prism Set

- Designed to provide advantages in measuring large angle strabismus
- Includes sizes 1/2-1-2-4-6-8-10-12-15-20-25-30-35-40-45-50 $\Delta$  Red Lens

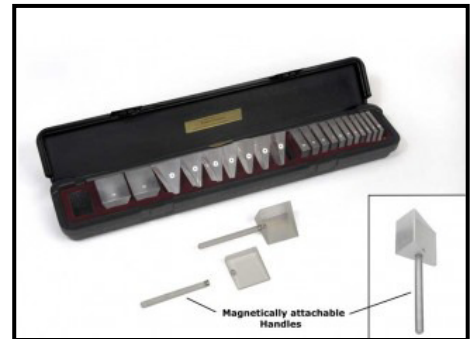
11311 - \$249.00



### SS-8 Prism Set

- Solves the problem of birefringence
- Includes sizes 3-5-8-10-12-15-20-25 $\Delta$  & 1 red lens
- Made of high-quality plastic
- Hard molded case

11318 - \$84.00



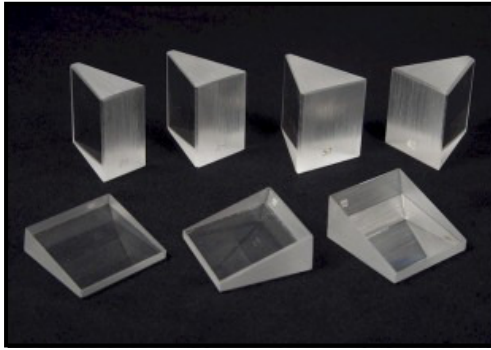
### S-22 Magnetic Stick Prism Set

- Compact case takes up less counter space
- Strong imbedded magnets attach easily to supplied magnetic handles
- Use as stick prisms or individually
- Includes sizes 1/2-1-2-3-4-5-6-7-8-9-10-12-14-16-18-20-25-30-35-40-45-50 $\Delta$  & Red Lens and two magnetic stick handles
- Additional handles available
- Made of high-quality plastic
- Hard molded case

11L23 - \$240.00



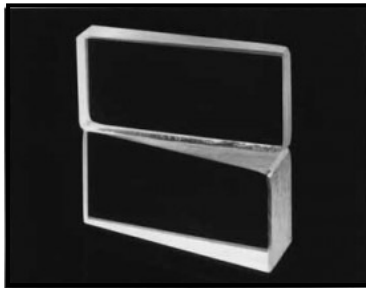
## Prisms



### Single Square Prisms

- Available sizes include 1/2-1-2-3-4-5-6-7-8-9-10-12-14-15-16-18-20-25-30-35-40-45-50Δ
- Made of high-quality acrylic

11101 - \$10.00

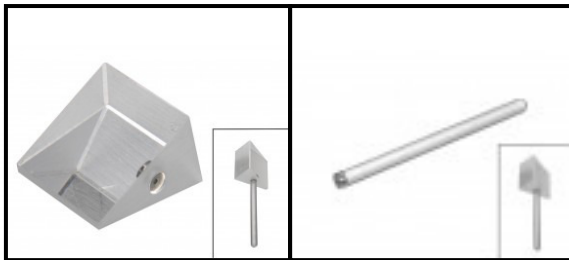


### Single Vergence Facility Prisms

- Used to test for binocular vision disorders and symptoms
- Default 3 BI/12 BO; all diopter versions available
- Made of high-quality plastic

11107 - (3 BI/12 BO) \$15.00

11107S - Custom diopters \$15.00



### Single Magnetic Prisms / Stick Prisms

- Strong imbedded magnets
- Available sizes include 1/2-1-2-3-4-5-6-7-8-9-10-12-14-15-16-18-20-25-30-35-40-45-50Δ
- Made of high-quality plastic

11201 – Magnetic Square Prism \$13.00

11202 – Magnetic Stick \$6.00

11204 – Magnetic Stick w/ Prism \$18.00



### Single Stick Prisms

- Use for vision therapy
- Available sizes include 1/2-1-2-3-4-5-6-7-8-9-10-12-14-15-16-18-20-25-30-35-40-45-50Δ
- 3-inch plastic handle
- Made of high-quality plastic

11104 - \$14.00



### Single Vergence Facility Stick Prisms

- Used to test for binocular vision disorders and symptoms
- All diopter versions available
- 3-inch plastic handle
- Made of high-quality plastic

11108 - \$16.00



### Single Magnetic Vergence Facility Prisms / Stick Prisms

- Strong embedded magnets
- All diopter versions available
- Made of high-quality plastic

11207 – Single VF \$19.00

11208 – VF Stick w/ Prism \$23.00



## Surgical Tools



### Magnetic Spuds

- Remove foreign bodies with minimal trauma
- Self contained magnetic field

16108 – Ellis \$55.00

16109 – Dix \$55.00



### Eye Sphere Introducer

- Helps hold and then place eye spheres in enucleated or eviscerated eye orbits
- Designed for efficient accurate placement

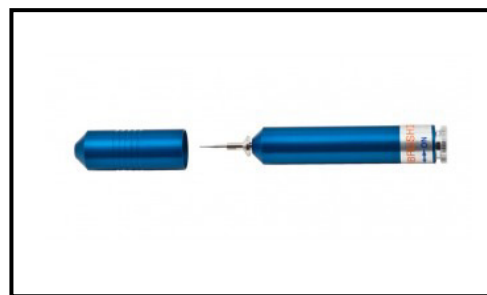
16118 - \$179.00



### Small Tono Tip Cleaner

- Quick and easy to use
- Portable

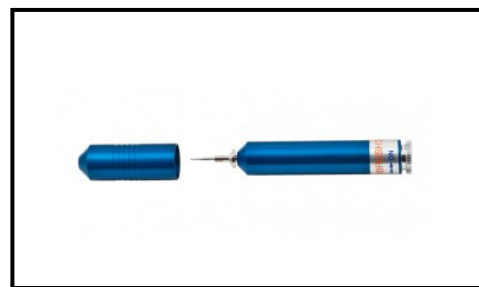
15225 - \$29.00



### Algerbrush II Rust Ring Remover .5mm Burr

- Used to remove foreign bodies rust from the eye of a patient
- Low torque motor powered by one single "AA" battery
- Equipped with a 0.5mm burr

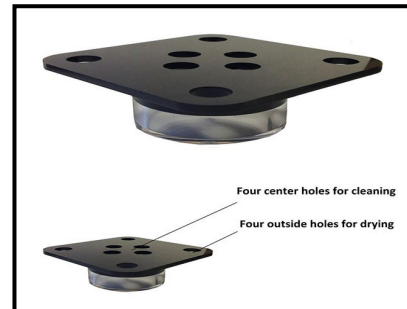
16120 - \$69.00



### Algerbrush II Rust Ring Remover 1mm Burr

- Used to remove foreign bodies rust from the eye of a patient
- Low torque motor powered by one single "AA" battery
- Equipped with a 1mm burr

16121 - \$69.00



### Tono Tip Cleaner

- Soak up to 4 tonometer tips
- Dry up to 4 tonometer tips

15175 – \$19.00

## Surgical Tools



### Algerbrush Replacement 0.5mm Burr

- Replacement 0.5mm burr for the Algerbrush II

16122 - \$10.00



### Algerbrush II Replacement Chuck

- Replacement chuck for the Algerbrush II

16124 - \$10.00



### AuroSling

- Used in the surgical procedure for the correction of ptosis
- Comes Sterile

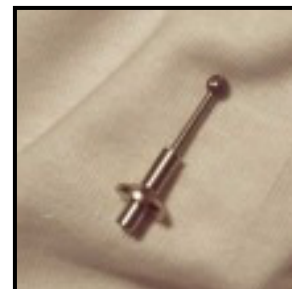
14130 - \$79.00



### Algerbrush Replacement 1mm Burr

- Replacement 1mm burr for the Algerbrush II

16123 - \$10.00



### Algerbrush Chuck w/ 2.5mm Round Fine Diamond Burr

- 2.5mm round fine diamond burr with chuck used with the algerbrush II

16125 - \$59.00

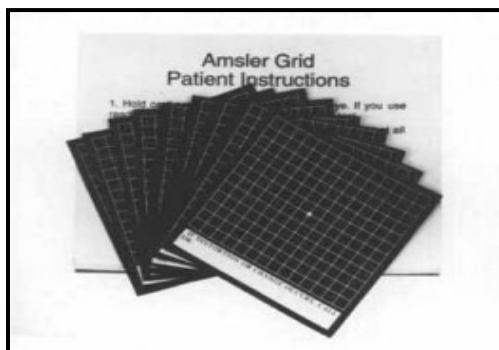
## Test Cards



### Modified Thorington Test Card

- Used to check the alignment of the eyes
- Helps diagnose uncrossed or crossed diplopia and RhypoP, LhyperP, RhyperP and LhypoP

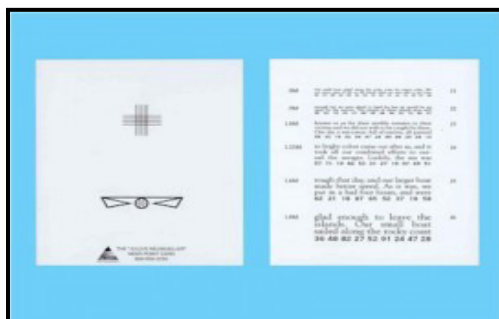
15111 - \$9.00



### Magnetic Modified Amsler Grid

- Self administered test for patients
- Valuable tool for detecting central visual field distortion

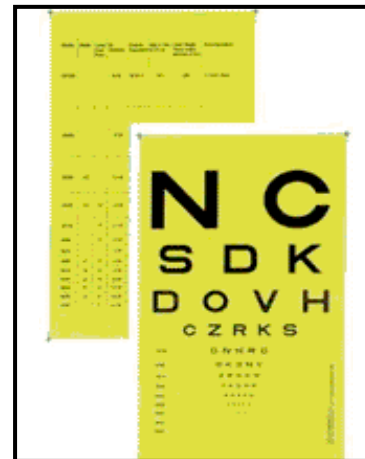
15301 – 10 Pack \$13.00



### Neumueller Card

- Print is designed in both "M" & "J" notation
- Print is crisp and sharp to ensure quality acuity vision testing

15122 - \$9.00



### Eger Equivalent Card

- Includes reversible red & green spectacles
- Highly durable

15134 - \$9.00



### Wormington Card

- Used to measure a patient's single letter near acuity & reading acuity

15135 – English Version \$7.00

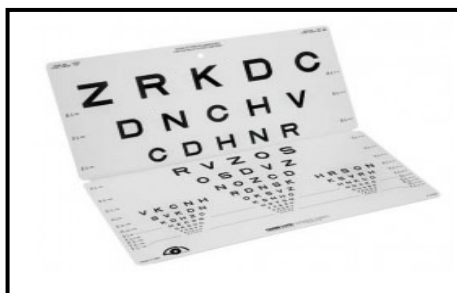


### Near Point Card Set

- 2 double side card set

15303 - \$13.00

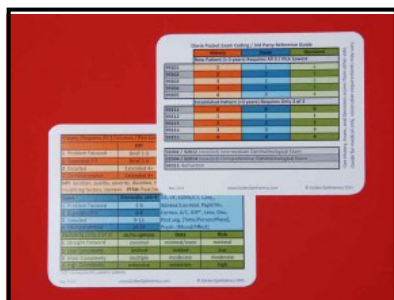
## Test Cards



### Sloan Letters Folding Chart

- Folding eye chart with Sloan letters optotypes
- Center fold for wall hanging
- 10 feet; 3-meter testing distance

15341 – \$58.00



### Dovie CPT Coding Card

- Pocket sized reference card for CPT and HCPCS coding
- 2mil thick card

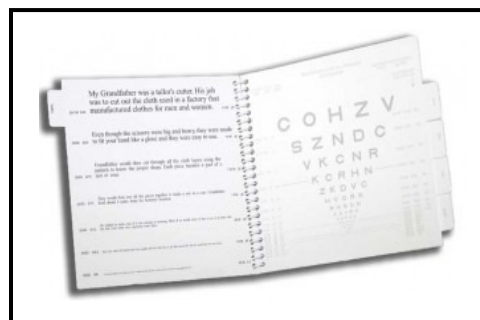
15208 – \$8.00



### Dovie Ophthalmic Drug Card

- Pocket sized reference card
- Contains concise information on over 65 most commonly used ophthalmic medications
- 2mil thick card

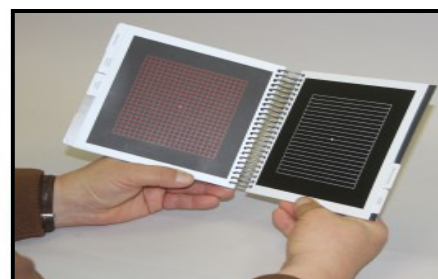
15136 – \$8.00



### Adult Near-Contrast Test Booklet

- Provides contrast sensitivity levels of 100, 25, 10, 5 & 2.5 percent using Michelson measures

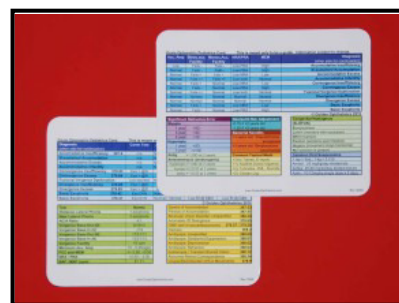
15361 – \$140.00



### Amsler Grid Book

- Provides 7 Amsler grids and a score sheet

15362 – \$63.00



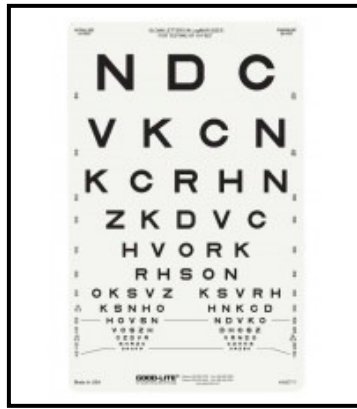
### Dovie Peds and Pupil Card

- Pocket sized reference card
- Contains concise information on the 11 most common binocular vision disorders and their associated clinical exam findings
- 2mil thick card

15137 – \$8.00



## Test Cards



### Sloan Letter Proportionally Spaced Distance

- Can be used separate or with the ESV 1200 Illuminated cabinet
- Measures 9" X 14"

15368 – \$21.00

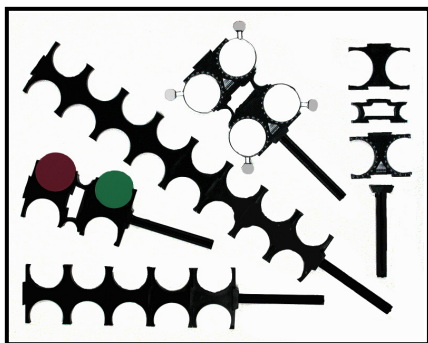


### LEA Symbols Proportionally Spaced

- Can be used separate or with the ESV 1200 Illuminated cabinet
- Measures 9" X 14"

15369 – \$21.00

## Trial Lenses / Flippers



### Lens Holders – (lenses not included)

15142 - Lens Holder	\$6.00
15143 – Lens Holder w/axis	\$7.00
15141 – Nose Bridge	\$6.00
15140 – Handle	\$6.00
15144 – 4 Well	\$22.00
15145 – 8 Well	\$33.00
12301- 38mm Red/Green Maddox	\$26.00



### Opto Clip

- Clips on top or bottom of glasses
- Holds three lenses each

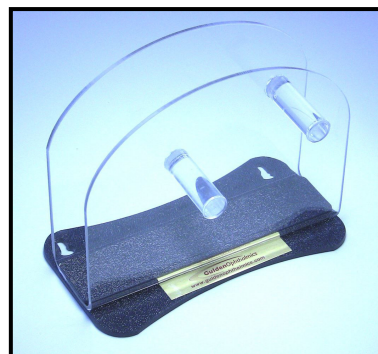
15323– \$49.00



### Jackson Crossed Cylinder

- Set of two

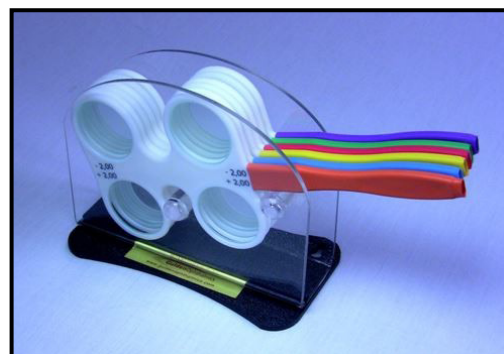
11133 – +0.25 & +0.50	\$35.00
11134 - +0.75 & +1.00	\$35.00



### 6 Flipper Holder

- New Design!
- Holds up to 6 flippers
- Desk or wall mountable

11122 - \$25.00



### Color Flipper Set

- Six standard Powers
- Color coded
- Easy to identify power

11123 – \$99.00



### Flippers

- Measure 8 ½" long by 3 ½" wide
- Made of durable plastic with glass lenses

11132 – (4 lens) \$25.00

## Trial Lenses / Flippers



### Raff Level Trial Flipper

- Balance prescriptions with a level to eliminate off axis rotation
- Use to balance cylinder and prismatic corrections

15156 – \$39.00



### Child Trial Frame

- Holds 3 lenses in front and 1 lens behind the frame
- PD fixed at 56mm

11153– \$79.00



### Pediatric Trial Frames

- PD fixed at 48mm
- Holds 2 lenses in front
- Frame made of flexible material

11154– \$59.00



### Universal Trial Frame

- Holds 3 lenses in front and 1 lens behind the frame
- PD range 24mm-40mm on each side
- Fully adjustable

11151– \$105.00



### Universal Trial Frame LW

- Holds 3 lenses in front and 1 lens behind the frame
- PD range 27mm-33mm on each side
- Fully adjustable

11152– \$105.00



### Trial Lens Multi-Pinhole Occluder

- 5 pinhole sizes from 8mm to 1.5mm
- The smaller pinholes provide routine acuity testing while the larger pinholes provide for testing suspected reduced vision

15104– \$5.00

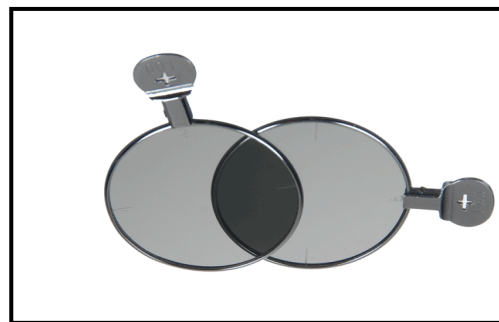
## Trial Lenses / Flippers



### **NEW Premium Trial Frame**

- Hold 3 trial lenses in the front and 2 lenses behind the frame
- Adjustable PD (50-80mm)
- Full rotation (360 degrees)
- Temple length and inclination are adjustable
- Vertex distance scale located on temples

11155– \$199.00



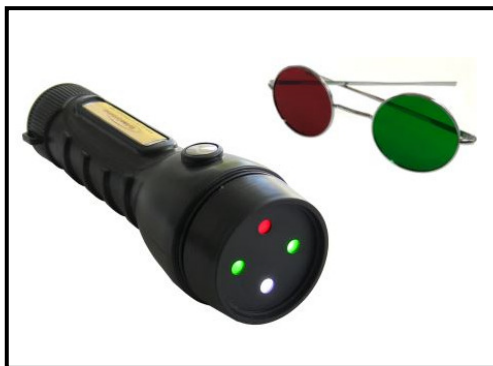
### **Polarized Trial Lens**

- Polarized trial lenses to be used in trial frames

11149– \$30.00



## Vision Screening Tools



### LED Worth Four Dot Test

- Durable quality
- Reversible red and green glasses
- Batteries included

15304– \$40.00



### Optokinetic Drum

- Test for nystagmus
- Measure 4" high by 6" diameter
- Used for adult or children

15360– \$140.00



### Red & Green Wrap Around Glasses

- Stylish attractive design
- No side light interference
- Snug fit around head

15316 – Adult \$16.00

15317 – Child \$15.00

15318 – Adult Reverse\* \$16.00

15319 – Child Reverse\* \$15.00

\*Red lens on left eye



### Adult Screening Kit

- Excellent for vision therapy
- Includes eye alignment near card, maddox rod, fixation sticks, chronister pocket acuity card, and a reusable penlight

15310– \$72.00



### Fixation Sticks

- Used for detailed accommodation stimulation targets
- UV Printed ink markings
- Precisely calibrated for saccade testing

15302– 4 Pack \$22.00

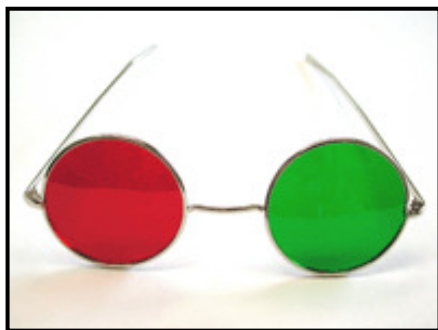


### Red & Green Black Frame Glasses

- Accurate color canceling
- Used for accurate cancellation of The Worth 4 Dot, The Three Character Test, The Lancaster Red-Green Tests, and The Hess Screen Tests colors

15320– 6 Pack \$48.00

## Vision Screening Tools



### Red & Green Metal Frame Spectacles

- Reversible metal frame
- Used for accurate cancellation of The Worth 4 Dot, The Three Character Test, The Lancaster Red-Green Tests, and The Hess Screen Tests colors
- Comes in a soft silk pouch

15105– \$19.00



### Tangent Screen

- Provides a very accurate method of charting the central and para-central field of vision
- Includes screen, wand and test object

11200– \$175.00



### Accurate Pupil Tester (APT)

- Measures pupil size to a fraction of a millimeter (functions as a pupilometer)
- Automatically flashes lights for RAPD testing (Direct response test, 1 sec swing, and 3 sec swing)
- Has a lens holder for presbyopic examiners (any prescription can be inserted into the lens holder)

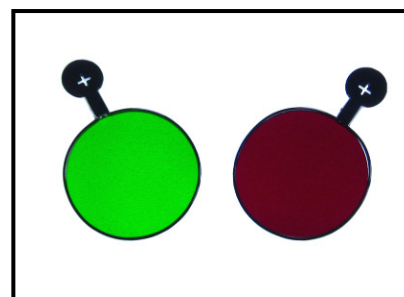
17009 – \$450.00



### Maddox Phoria Measure

- Combines large 25mm aperture, a red maddox mounted perpendicular to the handle in a 10PD prism in a rotating disc with knurled edge
- Designed to measure anisophoria
- Comes in a leather pouch

12136– \$79.00

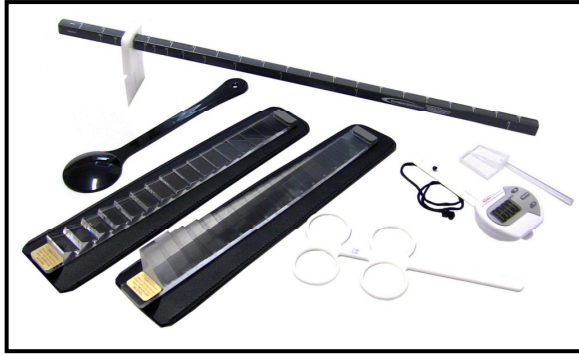


### Red and Green Trial Lenses

- Perform a variety of tests with these trial frame inserts

11148 – \$19.00

## Vision Therapy Tools



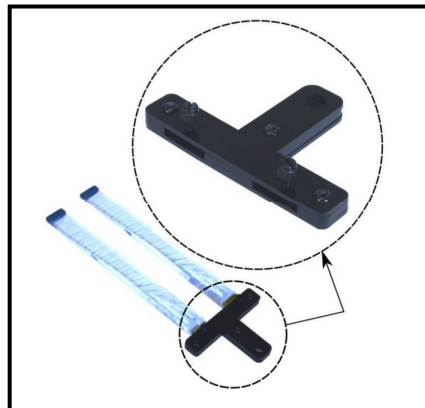
### Binocular Vision Assessment Kit

- These items are identical to those used in all of the research performed by the Convergence Insufficiency Treatment Trial (CITT) group

#### Kit Includes:

- (1) Black Occluder (SKU: 12112)
- (1) Vergence Facility Stick Prism (3/12 diopter) (SKU: 11108)
- (1) +/- 2D Flipper (SKU: 11132)
- (1) Accommodation Rule with vertical letter card (SKU: 15150)
- (1) BV-15 Vertical Prism Bar and B-16 Horizontal Prism Bar Set (SKU: 11314)
- (1) Fixi-Tic (Includes vertical letter fixation stick with 40cm cord) (SKU: 15112)

15329 – \$329.00

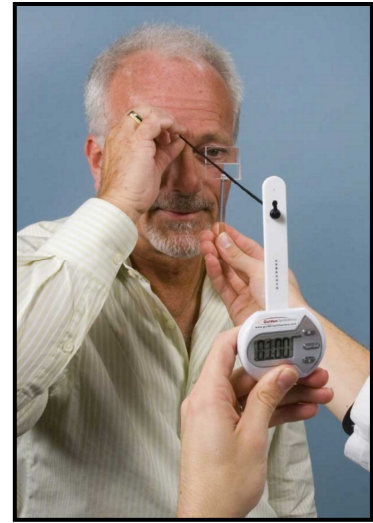


### Yoked Prism Bar Holder and Kit

- Used to quickly determine a patient's yoked prism prescription
- Sold individually (holder only) or with two horizontal prism bars
- Note: The holder will only accommodate Gulden prism bars

11118 – Holder only \$30.00

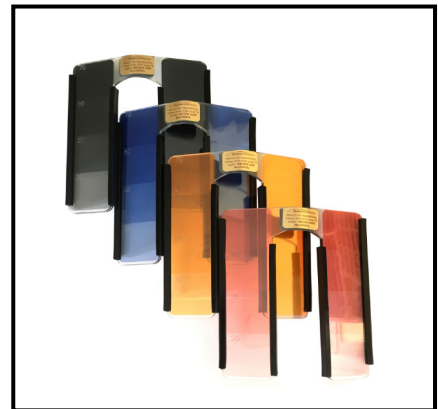
11119 – With two prism bars \$229.00



### Fixi-Tic, the Fixation Stick Timer

- Used to time vergence facility tests
- Beeps once one minute is over
- Sold as part of the Binocular Vision Assessment Kit or on its own

15112 – \$39.00



### Color Filter Bar Set

- Used to quickly determine the patient's tint preference for sunglasses
- Ideal for use with TBI and light sensitive patients

15327 – \$199.00

225 Cadwalader Avenue  
Elkins Park, PA 19027-2020  
215-884-8105

Fax 215-884-0418

e-mail: [info@guldenophthalmics.com](mailto:info@guldenophthalmics.com)  
[www.guldenophthalmics.com](http://www.guldenophthalmics.com)

## Vision Therapy Tools



### OculoMotor Assessment Tool (OMAT)

- Used for vergence and saccade testing
- Snaps together with strong magnetic connection
- Correct distances for VOMS protocol
- Comes with durable hard case

18009 – \$79.00