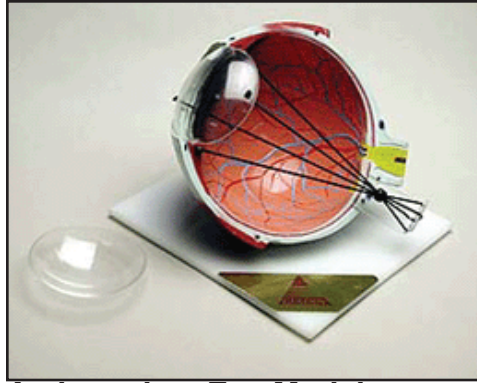


Models

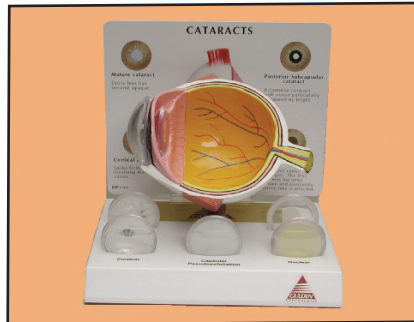


Astigmatism Eye Model

- Demonstrates Astigmatism
- Myopia
- Hyperopia
- Refraction error

15123

\$99.00

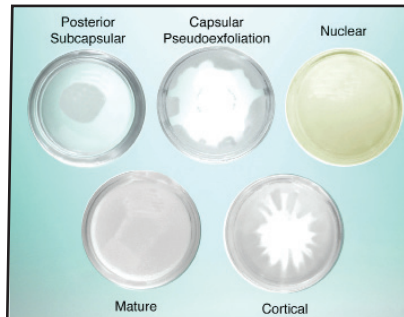


Cataract Eye Model

- Includes 5 Interchangeable lenses
- Subcapsular
- Capsular
- Mature
- Cortical
- Nuclear

15129

\$99.00



Cataract Lenses

- Includes 5 Interchangeable lenses
- Subcapsular
- Capsular
- Mature
- Cortical
- Nuclear

15119

\$49.00

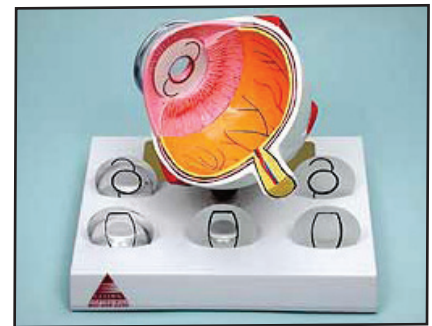


Cornea Model

- Includes 5 Interchangeable Corneas
- Keratoconus
- Bullous Keratopathy
- Fuch's Endothelial Dystrophy
- Recurrent Corneal Erosion
- Normal

15182

\$99.00

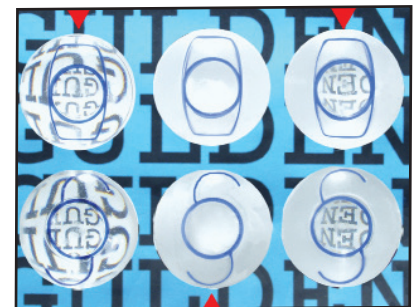


IOL Eye Model

- Includes 6 Interchangeable Corneas
- IOL and Toric implants of clear posterior capsule, cloudy capsule and post YAG posterior capsulotomy.

15149

\$99.00



IOL Lenses

- IOL and Toric implants of clear posterior capsule, cloudy capsule and post YAG posterior capsulotomy.

15147

\$49.00

225 Cadwalader Avenue
Elkins Park, PA 19027-2020

215-884-8105

Fax 215-884-0418

e-mail: info@guldenophthalmics.com

www.guldenophthalmics.com

02/18/2013