

Diagnostic Tools



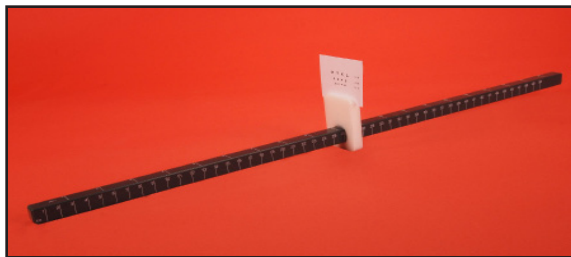
Automated Confrontation Test

- An automated LED gross confrontational visual field tester
 - Fast (both eyes in less than a minute)
- 17002 \$189.00



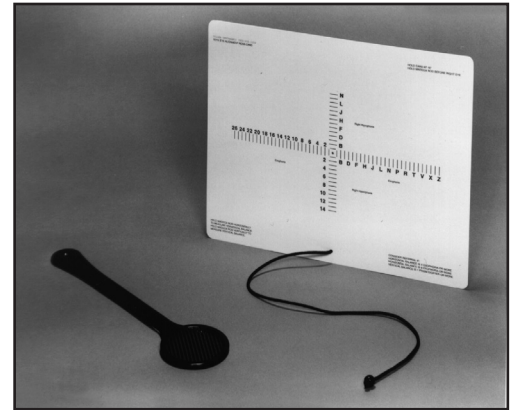
EyeView™ Visualizing Scope

- Gives patients a fascinating view of floaters and cataract opacity in their eyes
- Good educational tool
- Easy to Use 15220 \$39.00



R-50 Near Point Rule

- Easy To Read
- Includes Acuity Card
- Durable
- High Quality 15150 \$65.00



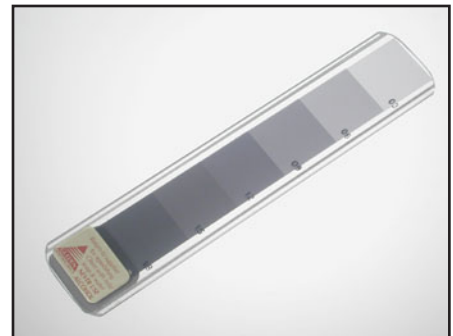
Eye Alignment Near Card

- Quantitative test
- Portable/easy to use
- Measures vertical and horizontal deviation
- Maddox included 15114 \$29.00



Luedde Exophthalmometer

- Pocket size
- Accurate parallax correction
- Modestly priced
- Leather case 16104 \$29.00



Neutral Density Bar

- Six standard ND levels
- Convenient "prism bar" format
- Compact, slides into pocket
- Quantifies APD accurately 15118 \$60.00