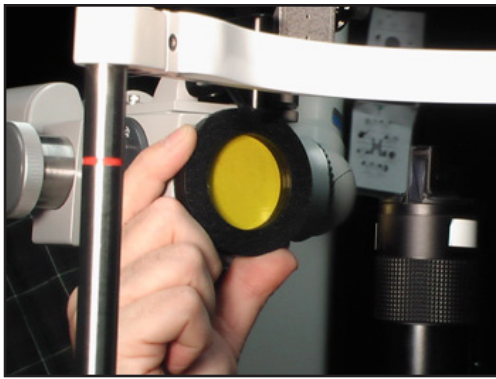


Diagnostic Tools

Gulden Ophthalmics



Slit Lamp Yellow Filter

- Use Detecting Subtle Staining
- For Dry Eye Syndrome
- Better Visualization of RGP Fluorescein Patterns
- Saves Time

15192

\$49.00



Digital Pupillometer

- With Vertex Distance

17006

\$249.00



Ohlson VSEF

- Easily fits in your pocket.
- The yellow filter increases the visibility of the fluorescein pattern.
- The red lens increases the visibility of lissamine green staining on the bulbar conjunctiva.

12135

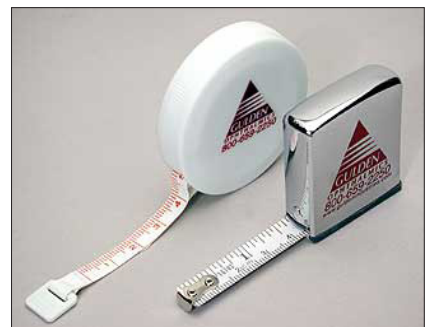
\$39.00



Disposable Penlight

15116

\$ 4.00



Plastic Tape Measure

16105

\$ 4.00

225 Cadwalader Avenue
Elkins Park, PA 19027-2020
215-884-8105

Fax 215-884-0418

e-mail: info@guldenophthalmics.com

www.guldenophthalmics.com

08/09/2010